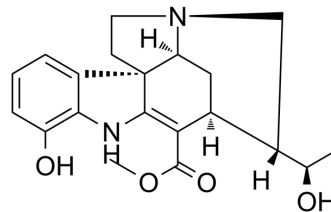


## 19-epi-Scholaricine

Cat. No.:	HY-N10379
CAS No.:	132923-06-9
Molecular Formula:	C <sub>20</sub> H <sub>24</sub> N <sub>2</sub> O <sub>4</sub>
Molecular Weight:	356.42
Target:	Reactive Oxygen Species
Pathway:	Immunology/Inflammation; Metabolic Enzyme/Protease; NF-κB
Storage:	Please store the product under the recommended conditions in the Certificate of Analysis.



### BIOLOGICAL ACTIVITY

<b>Description</b>	19-epi-Scholaricine is an orally active indole alkaloid that downregulates the expression of collagen fibrosis and increases superoxide dismutase (SOD) activities <sup>[1]</sup> .
--------------------	---

### REFERENCES

[1]. Zhao YL, et al. Pharmacological effects of indole alkaloids from *Alstonia scholaris* (L.) R. Br. on pulmonary fibrosis in vivo. *J Ethnopharmacol.* 2021 Mar 1;267:113506.

**Caution: Product has not been fully validated for medical applications. For research use only.**

Tel: 609-228-6898

Fax: 609-228-5909

E-mail: tech@MedChemExpress.com

Address: 1 Deer Park Dr, Suite Q, Monmouth Junction, NJ 08852, USA