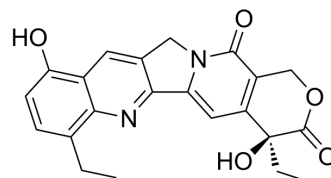


## 12-Ethyl-9-hydroxycamptothecin

Cat. No.:	HY-N2063
CAS No.:	119577-28-5
Molecular Formula:	C <sub>22</sub> H <sub>20</sub> N <sub>2</sub> O <sub>5</sub>
Molecular Weight:	392.4
Target:	Topoisomerase
Pathway:	Cell Cycle/DNA Damage
Storage:	4°C, protect from light * In solvent : -80°C, 6 months; -20°C, 1 month (protect from light)



### SOLVENT & SOLUBILITY

In Vitro	DMSO : 83.33 mg/mL (212.36 mM; Need ultrasonic)				
		Solvent Concentration	Mass 1 mg	5 mg	10 mg
	Preparing Stock Solutions	1 mM	2.5484 mL	12.7421 mL	25.4842 mL
		5 mM	0.5097 mL	2.5484 mL	5.0968 mL
		10 mM	0.2548 mL	1.2742 mL	2.5484 mL
Please refer to the solubility information to select the appropriate solvent.					
In Vivo	1. Add each solvent one by one: 10% DMSO >> 40% PEG300 >> 5% Tween-80 >> 45% saline Solubility: 2.08 mg/mL (5.30 mM); Suspended solution; Need ultrasonic  2. Add each solvent one by one: 10% DMSO >> 90% (20% SBE-β-CD in saline) Solubility: 2.08 mg/mL (5.30 mM); Suspended solution; Need ultrasonic				

### BIOLOGICAL ACTIVITY

Description	12-Ethyl-9-hydroxycamptothecin is a derivative of Camptothecin. Camptothecin (CPT), a kind of alkaloid, is a DNA topoisomerase I (Topo I) inhibitor with an IC <sub>50</sub> of 679 nM <sup>[1]</sup> .
In Vitro	12-Ethyl-9-hydroxycamptothecin is a derivative of Camptothecin. MCE has not independently confirmed the accuracy of these methods. They are for reference only.

### REFERENCES

[1]. Luzzio MJ, et al. Synthesis and antitumor activity of novel water soluble derivatives of camptothecin as specific inhibitors of topoisomerase I. J Med Chem.

**Caution: Product has not been fully validated for medical applications. For research use only.**

Tel: 609-228-6898

Fax: 609-228-5909

E-mail: [tech@MedChemExpress.com](mailto:tech@MedChemExpress.com)

Address: 1 Deer Park Dr, Suite Q, Monmouth Junction, NJ 08852, USA