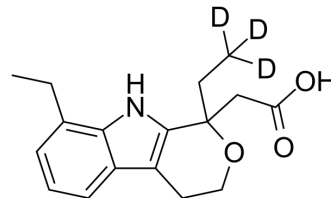


## (rac)-Etodolac-d3

<b>Cat. No.:</b>	HY-76251S1
<b>CAS No.:</b>	1276197-46-6
<b>Molecular Formula:</b>	C <sub>17</sub> H <sub>18</sub> D <sub>3</sub> NO <sub>3</sub>
<b>Molecular Weight:</b>	290.37
<b>Target:</b>	COX
<b>Pathway:</b>	Immunology/Inflammation
<b>Storage:</b>	Please store the product under the recommended conditions in the Certificate of Analysis.



### BIOLOGICAL ACTIVITY

<b>Description</b>	(Rac)-Etodolac-d3 ((Rac)-AY-24236-d3) is a labelled racemic Etodolac. Etodolac (AY-24236) is a non-steroidal anti-inflammatory compound that is a non-selective inhibitor of COX (IC <sub>50</sub> =53.5 nM)
<b>In Vitro</b>	Stable heavy isotopes of hydrogen, carbon, and other elements have been incorporated into drug molecules, largely as tracers for quantitation during the drug development process. Deuteration has gained attention because of its potential to affect the pharmacokinetic and metabolic profiles of drugs <sup>[1]</sup> . MCE has not independently confirmed the accuracy of these methods. They are for reference only.

### REFERENCES

- [1]. Russak EM, et al. Impact of Deuterium Substitution on the Pharmacokinetics of Pharmaceuticals. *Ann Pharmacother.* 2019;53(2):211-216.
- [2]. Riendeau D, et al. Biochemical and pharmacological profile of a tetrasubstituted furanone as a highly selective COX-2 inhibitor. *Br J Pharmacol.* 1997 May;121(1):105-17.
- [3]. Ito S, Tajima K, Nogawa M et al. Etodolac, a cyclooxygenase-2 inhibitor, attenuates paclitaxel-induced peripheral neuropathy in a mouse model of mechanical allodynia. *J Pharmacol Exp Ther.* 2012 Jul;342(1):53-60.
- [4]. Yanaoka K, Oka M, Yoshimura N et al. Preventive effects of etodolac, a selective cyclooxygenase-2 inhibitor, on cancer development in extensive metaplastic gastritis, a Helicobacter pylori-negative precancerous lesion. *Int J Cancer.* 2010 Mar 15;126(6):1467-73.
- [5]. Matsuyama M, Yoshimura R, Hase T et al. Administration of the selective cyclooxygenase (COX)-2 inhibitor etodolac prolongs cardiac allograft survival in a mouse model. *Mol Med Report.* 2010 Sep-Oct;3(5):771-4.

**Caution: Product has not been fully validated for medical applications. For research use only.**

Tel: 609-228-6898

Fax: 609-228-5909

E-mail: tech@MedChemExpress.com

Address: 1 Deer Park Dr, Suite Q, Monmouth Junction, NJ 08852, USA