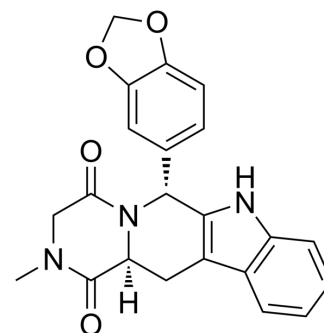


cis-Tadalafil

Cat. No.:	HY-90009B
CAS No.:	171596-27-3
Molecular Formula:	C ₂₂ H ₁₉ N ₃ O ₄
Molecular Weight:	389.4
Target:	Phosphodiesterase (PDE)
Pathway:	Metabolic Enzyme/Protease
Storage:	Please store the product under the recommended conditions in the Certificate of Analysis.



BIOLOGICAL ACTIVITY

Description	cis-Tadalafil is a PDE5 inhibitor (IC ₅₀ : 0.09 μM). cis-Tadalafil can be used for research of cardiovascular diseases ^[1] .
IC ₅₀ & Target	PDE5 0.09 μM (IC ₅₀)
In Vitro	cis-Tadalafil (Compound 12b) inhibits PDE5 with an IC ₅₀ of 0.09 μM ^[1] . MCE has not independently confirmed the accuracy of these methods. They are for reference only.

REFERENCES

[1]. Daugan A, et al. The discovery of tadalafil: a novel and highly selective PDE5 inhibitor. 2: 2,3,6,7,12,12a-hexahydropyrazino[1',2':1,6]pyrido[3,4-b]indole-1,4-dione analogues. J Med Chem. 2003 Oct 9;46(21):4533-42.

Caution: Product has not been fully validated for medical applications. For research use only.

Tel: 609-228-6898

Fax: 609-228-5909

E-mail: tech@MedChemExpress.com

Address: 1 Deer Park Dr, Suite Q, Monmouth Junction, NJ 08852, USA