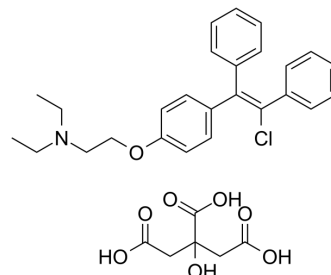


## Zuclomiphene citrate

<b>Cat. No.:</b>	HY-B1617A
<b>CAS No.:</b>	7619-53-6
<b>Molecular Formula:</b>	C <sub>32</sub> H <sub>36</sub> ClNO <sub>8</sub>
<b>Molecular Weight:</b>	598.08
<b>Target:</b>	Estrogen Receptor/ERR
<b>Pathway:</b>	Vitamin D Related/Nuclear Receptor
<b>Storage:</b>	4°C, sealed storage, away from moisture * In solvent : -80°C, 6 months; -20°C, 1 month (sealed storage, away from moisture)



### SOLVENT & SOLUBILITY

#### In Vitro

DMSO : 100 mg/mL (167.20 mM; Need ultrasonic)

Solvent	Mass	Concentration		
		1 mg	5 mg	10 mg
Preparing Stock Solutions	1 mM	1.6720 mL	8.3601 mL	16.7202 mL
	5 mM	0.3344 mL	1.6720 mL	3.3440 mL
	10 mM	0.1672 mL	0.8360 mL	1.6720 mL

Please refer to the solubility information to select the appropriate solvent.

### BIOLOGICAL ACTIVITY

#### Description

Zuclomiphene citrate is a cis isomer of Clomiphene citrate. Zuclomiphene citrate has an antiestrogenic effect and can inhibit the secretion of luteinizing hormone (LH) more than the trans isomer. Zuclomiphene citrate is also an orally active hypocholesterolemic agent<sup>[1][2][3][4]</sup>.

#### IC<sub>50</sub> & Target

Estrogen Receptor/ERR

### REFERENCES

- [1]. Fontenot GK, et al. Differential effects of isomers of clomiphene citrate on reproductive tissues in male mice. *BJU Int.* 2016 Feb;117(2):344-50.
- [2]. Mikkelsen TJ, et al. Single-dose pharmacokinetics of clomiphene citrate in normal volunteers. *Fertil Steril.* 1986 Sep;46(3):392-6.
- [3]. Sutherland RL. Estrogen antagonists in chick oviduct: antagonist activity of eight synthetic triphenylethylene derivatives and their interactions with cytoplasmic and nuclear estrogen receptors. *Endocrinology.* 1981 Dec;109(6):2061-8.
- [4]. Ramsey RB, et al. The biochemical and morphological response of hydrolytic enzymes in the developing brain to hypocholesterolemic agents. *Acta Neuropathol.*

**Caution: Product has not been fully validated for medical applications. For research use only.**

Tel: 609-228-6898

Fax: 609-228-5909

E-mail: [tech@MedChemExpress.com](mailto:tech@MedChemExpress.com)

Address: 1 Deer Park Dr, Suite Q, Monmouth Junction, NJ 08852, USA