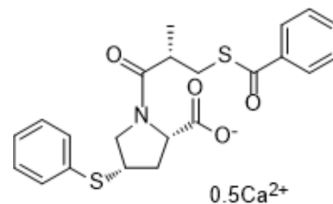


Zofenopril calcium

Cat. No.:	HY-B0655
CAS No.:	81938-43-4
Molecular Formula:	C ₂₂ H ₂₂ Ca _{0.5} NO ₄ S ₂
Molecular Weight:	448.58
Target:	Angiotensin-converting Enzyme (ACE); Reactive Oxygen Species
Pathway:	Metabolic Enzyme/Protease; Immunology/Inflammation; NF-κB
Storage:	4°C, sealed storage, away from moisture * In solvent : -80°C, 6 months; -20°C, 1 month (sealed storage, away from moisture)



SOLVENT & SOLUBILITY

In Vitro	DMSO : 2 mg/mL (4.46 mM; Need ultrasonic)				
		Solvent Concentration	Mass		
	Preparing Stock Solutions		1 mg	5 mg	10 mg
		1 mM	2.2293 mL	11.1463 mL	22.2926 mL
		5 mM	---	---	---
10 mM	---	---	---		
Please refer to the solubility information to select the appropriate solvent.					

BIOLOGICAL ACTIVITY

Description	Zofenopril Calcium (SQ26991) is an orally active angiotensin-converting enzyme (ACE) inhibitor with antioxidant activity and cardioprotective effects. Zofenopril Calcium reduces ROS production and GSH consumption and helps inhibit foam cell formation, thus slowing the progression of atherosclerosis. Zofenopril Calcium prevents cardiac damage caused by chronic Doxorubicin (HY-15142A).
In Vitro	Zofenopril calcium (30-60 μM; 30 min) decreases oxLDL-induced E-selectin, ICAM-1, and VCAM-1 expression in human umbilical vein endothelial (HUVEC) monolayers ^[1] . Zofenopril calcium (30-60 μM; 30 min) inhibits oxLDL-induced ROS and superoxide formation in HUVECs ^[1] . MCE has not independently confirmed the accuracy of these methods. They are for reference only.
In Vivo	Zofenopril calcium (15 mg/kg/day; po via diet for 9 weeks) results a significant decrease in body weight, and prevents the cardiotoxic effects of doxorubicin in rats ^[2] . Zofenopril calcium shows no significant antitumor effect in rat A2780 xenograft model ^[2] . MCE has not independently confirmed the accuracy of these methods. They are for reference only.

Caution: Product has not been fully validated for medical applications. For research use only.

Tel: 609-228-6898

Fax: 609-228-5909

E-mail: tech@MedChemExpress.com

Address: 1 Deer Park Dr, Suite Q, Monmouth Junction, NJ 08852, USA