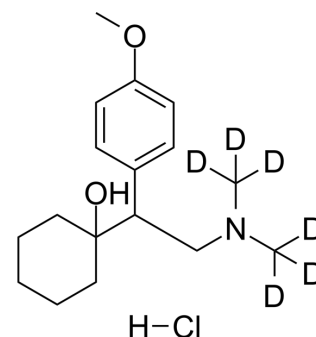


Venlafaxine-d₆ hydrochloride

Cat. No.:	HY-B0196AS1
CAS No.:	1062606-12-5
Molecular Formula:	C ₁₇ H ₂₂ D ₆ ClNO ₂
Molecular Weight:	319.9
Target:	Serotonin Transporter
Pathway:	Neuronal Signaling
Storage:	4°C, sealed storage, away from moisture * In solvent : -80°C, 6 months; -20°C, 1 month (sealed storage, away from moisture)



SOLVENT & SOLUBILITY

In Vitro

DMSO : 10 mg/mL (31.26 mM; ultrasonic and warming and heat to 60°C)
DMSO : 10 mg/mL (31.26 mM; ultrasonic and warming and heat to 60°C)

Preparing Stock Solutions	Solvent Concentration	Mass	1 mg	5 mg	10 mg
		1 mM	3.1260 mL	15.6299 mL	31.2598 mL
	5 mM	0.6252 mL	3.1260 mL	6.2520 mL	
	10 mM	0.3126 mL	1.5630 mL	3.1260 mL	

Please refer to the solubility information to select the appropriate solvent.

BIOLOGICAL ACTIVITY

Description

Venlafaxine-d₆ (hydrochloride) is the deuterium labeled Venlafaxine hydrochloride. Venlafaxine hydrochloride (Wy 45030 hydrochloride) is an orally active, potent serotonin (5-HT)/norepinephrine (NE) reuptake dual inhibitor. Venlafaxine is an antidepressant[1].

In Vitro

Stable heavy isotopes of hydrogen, carbon, and other elements have been incorporated into drug molecules, largely as tracers for quantitation during the drug development process. Deuteration has gained attention because of its potential to affect the pharmacokinetic and metabolic profiles of drugs^[1].
MCE has not independently confirmed the accuracy of these methods. They are for reference only.

REFERENCES

- [1]. Russak EM, et al. Impact of Deuterium Substitution on the Pharmacokinetics of Pharmaceuticals. *Ann Pharmacother*. 2019;53(2):211-216.
- [2]. Bymaster FP, et al. Comparative affinity of duloxetine and venlafaxine for serotonin and norepinephrine transporters in vitro and in vivo, human serotonin receptor subtypes, and other neuronal receptors. *Neuropsychopharmacology*. 2001 Dec;25(6):871-80.

Caution: Product has not been fully validated for medical applications. For research use only.

Tel: 609-228-6898

Fax: 609-228-5909

E-mail: tech@MedChemExpress.com

Address: 1 Deer Park Dr, Suite Q, Monmouth Junction, NJ 08852, USA