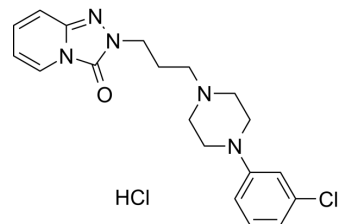


Trazodone hydrochloride

Cat. No.:	HY-B0478
CAS No.:	25332-39-2
Molecular Formula:	C ₁₉ H ₂₃ Cl ₂ N ₅ O
Molecular Weight:	408.32
Target:	5-HT Receptor
Pathway:	GPCR/G Protein; Neuronal Signaling
Storage:	4°C, sealed storage, away from moisture * In solvent : -80°C, 6 months; -20°C, 1 month (sealed storage, away from moisture)



SOLVENT & SOLUBILITY

In Vitro	DMSO : 16.67 mg/mL (40.83 mM; Need ultrasonic)					
	H ₂ O : 16.67 mg/mL (40.83 mM; Need ultrasonic)					
	Preparing Stock Solutions	Solvent	Mass	1 mg	5 mg	10 mg
		Concentration				
		1 mM		2.4491 mL	12.2453 mL	24.4906 mL
5 mM			0.4898 mL	2.4491 mL	4.8981 mL	
	10 mM		0.2449 mL	1.2245 mL	2.4491 mL	
Please refer to the solubility information to select the appropriate solvent.						
In Vivo	1. Add each solvent one by one: 10% DMSO >> 40% PEG300 >> 5% Tween-80 >> 45% saline Solubility: ≥ 1.67 mg/mL (4.09 mM); Clear solution					
	2. Add each solvent one by one: 10% DMSO >> 90% (20% SBE-β-CD in saline) Solubility: ≥ 1.67 mg/mL (4.09 mM); Clear solution					
	3. Add each solvent one by one: 10% DMSO >> 90% corn oil Solubility: ≥ 1.67 mg/mL (4.09 mM); Clear solution					

BIOLOGICAL ACTIVITY

Description	Trazodone hydrochloride (AF-1161) is a serotonin receptor antagonist and reuptake inhibitor. Trazodone hydrochloride can be used for the research of major depressive disorder. Trazodone hydrochloride also has potential for sleep disorder research ^[1] .
IC₅₀ & Target	5-HT Receptor ^[1] .

CUSTOMER VALIDATION

- Clin Chem. 2019 Dec;65(12):1522-1531.

See more customer validations on www.MedChemExpress.com

REFERENCES

[1]. Hara, M., A. Fitton, and D. McTavish, Trazodone. A review of its pharmacology, therapeutic use in depression and therapeutic potential in other disorders. *Drugs Aging*, 1994, 4(4): p. 331-55.

Caution: Product has not been fully validated for medical applications. For research use only.

Tel: 609-228-6898

Fax: 609-228-5909

E-mail: tech@MedChemExpress.com

Address: 1 Deer Park Dr, Suite Q, Monmouth Junction, NJ 08852, USA