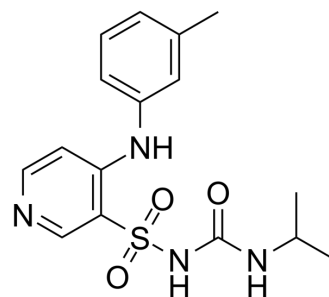


## Torsemide

<b>Cat. No.:</b>	HY-B0247		
<b>CAS No.:</b>	56211-40-6		
<b>Molecular Formula:</b>	C <sub>16</sub> H <sub>20</sub> N <sub>4</sub> O <sub>3</sub> S		
<b>Molecular Weight:</b>	348.42		
<b>Target:</b>	Others		
<b>Pathway:</b>	Others		
<b>Storage:</b>	Powder	-20°C	3 years
		4°C	2 years
	In solvent	-80°C	2 years
		-20°C	1 year



### SOLVENT & SOLUBILITY

#### In Vitro

DMSO : 25 mg/mL (71.75 mM; Need ultrasonic)

Concentration	Solvent	Mass	1 mg	5 mg	10 mg
			1 mg	5 mg	10 mg
Preparing Stock Solutions	1 mM		2.8701 mL	14.3505 mL	28.7010 mL
	5 mM		0.5740 mL	2.8701 mL	5.7402 mL
	10 mM		0.2870 mL	1.4350 mL	2.8701 mL

Please refer to the solubility information to select the appropriate solvent.

#### In Vivo

- Add each solvent one by one: 10% DMSO >> 40% PEG300 >> 5% Tween-80 >> 45% saline  
Solubility: ≥ 1 mg/mL (2.87 mM); Clear solution
- Add each solvent one by one: 10% DMSO >> 90% (20% SBE-β-CD in saline)  
Solubility: ≥ 1 mg/mL (2.87 mM); Clear solution
- Add each solvent one by one: 10% DMSO >> 90% corn oil  
Solubility: ≥ 1 mg/mL (2.87 mM); Clear solution

### BIOLOGICAL ACTIVITY

#### Description

Torsemide (Torasemide) is an orally active loop diuretic. Torsemide has anti-aldosterone and vasodilatory effects. Torsemide also can be used for the research of heart failure, renal disease and hepatic cirrhosis<sup>[1][1][3]</sup>.

#### In Vitro

Torsemide binds reversibly to Na<sup>+</sup>/2Cl<sup>-</sup>/K<sup>+</sup> cotransporter carrier protein, thus reducing or abolishing NaCl reabsorption<sup>[1]</sup>. MCE has not independently confirmed the accuracy of these methods. They are for reference only.

---

## REFERENCES

---

- [1]. Ishido, H., et al. Torasemide for the Treatment of Heart Failure. *Cardiovascular & Hematological Disorders-Drug Targets*. 2008. 8(2), 127–132.
- [2]. Goodfriend, T. L., et al. Torsemide inhibits aldosterone secretion in vitro. *Life Sciences*. 1998. 63(3), PL45–PL50.
- [3]. H A Friedel, et al. Torasemide. A review of its pharmacological properties and therapeutic potential. *Drugs*. 1991 Jan;41(1):81-103.
- 

**Caution: Product has not been fully validated for medical applications. For research use only.**

Tel: 609-228-6898

Fax: 609-228-5909

E-mail: [tech@MedChemExpress.com](mailto:tech@MedChemExpress.com)

Address: 1 Deer Park Dr, Suite Q, Monmouth Junction, NJ 08852, USA