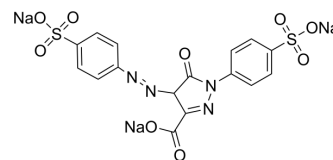


## Tartrazine

<b>Cat. No.:</b>	HY-D0257
<b>CAS No.:</b>	1934-21-0
<b>Molecular Formula:</b>	C <sub>16</sub> H <sub>9</sub> N <sub>4</sub> Na <sub>3</sub> O <sub>9</sub> S <sub>2</sub>
<b>Molecular Weight:</b>	534.36
<b>Target:</b>	Fluorescent Dye
<b>Pathway:</b>	Others
<b>Storage:</b>	4°C, sealed storage, away from moisture and light * In solvent : -80°C, 6 months; -20°C, 1 month (sealed storage, away from moisture and light)



### SOLVENT & SOLUBILITY

#### In Vitro

DMSO : 50 mg/mL (93.57 mM; Need ultrasonic)  
H<sub>2</sub>O : 50 mg/mL (93.57 mM; Need ultrasonic)

Concentration	Mass		
	1 mg	5 mg	10 mg
1 mM	1.8714 mL	9.3570 mL	18.7140 mL
5 mM	0.3743 mL	1.8714 mL	3.7428 mL
10 mM	0.1871 mL	0.9357 mL	1.8714 mL

Please refer to the solubility information to select the appropriate solvent.

#### In Vivo

- Add each solvent one by one: PBS  
Solubility: 16.67 mg/mL (31.20 mM); Clear solution; Need ultrasonic
- Add each solvent one by one: 10% DMSO >> 90% (20% SBE-β-CD in saline)  
Solubility: ≥ 2.5 mg/mL (4.68 mM); Clear solution

### BIOLOGICAL ACTIVITY

#### Description

Tartrazine is a synthetic lemon yellow azo dye primarily used as a food coloring. Tartrazine is water-soluble and has a maximum absorbance in an aqueous solution at 425 nm.

**Caution: Product has not been fully validated for medical applications. For research use only.**

Tel: 609-228-6898

Fax: 609-228-5909

E-mail: tech@MedChemExpress.com

Address: 1 Deer Park Dr, Suite Q, Monmouth Junction, NJ 08852, USA