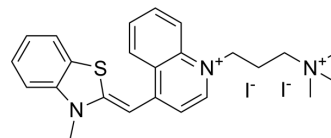


TO-PRO 1

Cat. No.:	HY-D0917
CAS No.:	157199-59-2
Molecular Formula:	C ₂₄ H ₂₉ I ₂ N ₃ S
Molecular Weight:	645.38
Target:	DNA Stain
Pathway:	Cell Cycle/DNA Damage
Storage:	-20°C, sealed storage, away from moisture and light * In solvent : -80°C, 6 months; -20°C, 1 month (sealed storage, away from moisture and light)



BIOLOGICAL ACTIVITY

Description

TO-PRO 1 is a DNA binding fluorochrome, that attached to the surface of the Feraheme (FH) nanoparticle (NP), to obtain a fluorochrome-functionalized NP. TO-PRO 1 binds DNA through intercalation, and acts as a vital fluorochrome for necrotic cells^[1].

REFERENCES

[1]. Hoonsung Cho, et al. Fluorochrome-functionalized nanoparticles for imaging DNA in biological systems. ACS Nano. 2013 Mar 26;7(3):2032-41.

Caution: Product has not been fully validated for medical applications. For research use only.

Tel: 609-228-6898

Fax: 609-228-5909

E-mail: tech@MedChemExpress.com

Address: 1 Deer Park Dr, Suite Q, Monmouth Junction, NJ 08852, USA