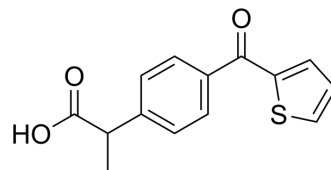


Suprofen

Cat. No.:	HY-B0270		
CAS No.:	40828-46-4		
Molecular Formula:	C ₁₄ H ₁₂ O ₃ S		
Molecular Weight:	260.31		
Target:	PGE synthase		
Pathway:	Immunology/Inflammation		
Storage:	Powder	-20°C	3 years
		4°C	2 years
	In solvent	-80°C	2 years
		-20°C	1 year



SOLVENT & SOLUBILITY

In Vitro

DMSO : ≥ 100 mg/mL (384.16 mM)
 * "≥" means soluble, but saturation unknown.

Preparing Stock Solutions	Solvent Concentration	Mass		
		1 mg	5 mg	10 mg
	1 mM	3.8416 mL	19.2079 mL	38.4157 mL
	5 mM	0.7683 mL	3.8416 mL	7.6831 mL
	10 mM	0.3842 mL	1.9208 mL	3.8416 mL

Please refer to the solubility information to select the appropriate solvent.

In Vivo

- Add each solvent one by one: 10% DMSO >> 40% PEG300 >> 5% Tween-80 >> 45% saline
 Solubility: ≥ 2.5 mg/mL (9.60 mM); Clear solution
- Add each solvent one by one: 10% DMSO >> 90% (20% SBE-β-CD in saline)
 Solubility: ≥ 2.5 mg/mL (9.60 mM); Clear solution
- Add each solvent one by one: 10% DMSO >> 90% corn oil
 Solubility: ≥ 2.5 mg/mL (9.60 mM); Clear solution

BIOLOGICAL ACTIVITY

Description

Suprofen (TN-762) is a non-steroidal anti-inflammatory drug (NSAID).

IC₅₀ & Target

PGE synthase^[1].

In Vitro

Suprofen (TN-762) is an NSAID. Suprofen (TN-762) is an ibuprofen-type anti-inflammatory analgesic and antipyretic. It inhibits prostaglandin synthesis and has been proposed as an anti-arthritis. suprofen was clinically effective but the

differential suppression of prostanoids favors 200mg which spares 6-keto PGF1a^[1].
MCE has not independently confirmed the accuracy of these methods. They are for reference only.

REFERENCES

- [1]. Yeadon, A., et al., Suprofen. An overview of long-term safety. *Pharmacology*, 1983. 27 Suppl 1: p. 87-94.
- [2]. Dawood, M.Y. and F.S. Khan-Dawood, Differential suppression of menstrual fluid prostaglandin F2a, prostaglandin E2, 6-keto prostaglandin F1a and thromboxane B2 by suprofen in women with primary dysmenorrhea. *Prostaglandins Other Lipid Mediat*, 2007. 83(1-2): p. 146-53.
-

Caution: Product has not been fully validated for medical applications. For research use only.

Tel: 609-228-6898

Fax: 609-228-5909

E-mail: tech@MedChemExpress.com

Address: 1 Deer Park Dr, Suite Q, Monmouth Junction, NJ 08852, USA