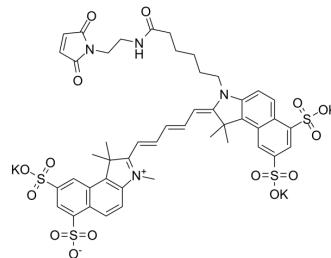


Sulfo-Cyanine5.5 maleimide potassium

Cat. No.:	HY-D1600
CAS No.:	2183440-58-4
Molecular Formula:	C ₄₆ H ₄₅ K ₃ N ₄ O ₁₅ S ₄
Molecular Weight:	1139.42
Target:	Fluorescent Dye
Pathway:	Others
Storage:	Please store the product under the recommended conditions in the Certificate of Analysis.



BIOLOGICAL ACTIVITY

Description

Sulfo-Cyanine5.5 maleimide potassium is a fluorescent dye. Sulfo-Cyanine5.5 is a nearinfrared (NIR) fluorophore with excitation maximum 675 nm and emission maximum 694 nm. Sulfo-Cyanine5.5 maleimide potassium can be used for the labeling of sensitive proteins, nanoparticles, and highly hydrophilic biopolymers^{[1][2]}.

REFERENCES

- [1]. Duss O, et al. Transient Protein-RNA Interactions Guide Nascent Ribosomal RNA Folding. *Cell*. 2019 Nov 27;179(6):1357-1369.e16.
- [2]. Ezeani M, et al. Collagen-Targeted Peptides for Molecular Imaging of Diffuse Cardiac Fibrosis. *J Am Heart Assoc*. 2021 Sep 21;10(18):e022139.

Caution: Product has not been fully validated for medical applications. For research use only.

Tel: 609-228-6898

Fax: 609-228-5909

E-mail: tech@MedChemExpress.com

Address: 1 Deer Park Dr, Suite Q, Monmouth Junction, NJ 08852, USA