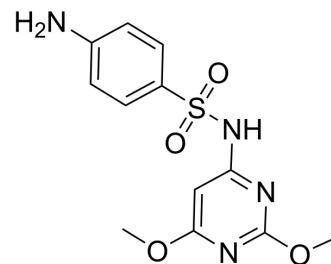


Sulfadimethoxine

Cat. No.:	HY-B0337		
CAS No.:	122-11-2		
Molecular Formula:	C ₁₂ H ₁₄ N ₄ O ₄ S		
Molecular Weight:	310.33		
Target:	Bacterial; Antibiotic		
Pathway:	Anti-infection		
Storage:	Powder	-20°C	3 years
		4°C	2 years
	In solvent	-80°C	2 years
		-20°C	1 year



SOLVENT & SOLUBILITY

In Vitro

DMSO : ≥ 100 mg/mL (322.24 mM)
 * "≥" means soluble, but saturation unknown.

Preparing Stock Solutions	Solvent Concentration	Mass		
		1 mg	5 mg	10 mg
	1 mM	3.2224 mL	16.1119 mL	32.2238 mL
	5 mM	0.6445 mL	3.2224 mL	6.4448 mL
	10 mM	0.3222 mL	1.6112 mL	3.2224 mL

Please refer to the solubility information to select the appropriate solvent.

In Vivo

- Add each solvent one by one: 10% DMSO >> 40% PEG300 >> 5% Tween-80 >> 45% saline
 Solubility: ≥ 2.5 mg/mL (8.06 mM); Clear solution
- Add each solvent one by one: 10% DMSO >> 90% (20% SBE-β-CD in saline)
 Solubility: ≥ 2.5 mg/mL (8.06 mM); Clear solution
- Add each solvent one by one: 10% DMSO >> 90% corn oil
 Solubility: ≥ 2.5 mg/mL (8.06 mM); Clear solution

BIOLOGICAL ACTIVITY

Description

Sulfadimethoxine (Sulphadimethoxine) is a sulfonamide antibiotic used to treat many infections^{[1][2]}.

IC₅₀ & Target

Antibacterial

In Vitro

Sulfadimethoxine is a sulfonamide antibiotic. Sulfadimethoxine is used to treat many infections including treatment of respiratory, urinary tract, enteric, and soft tissue infections.

MCE has not independently confirmed the accuracy of these methods. They are for reference only.

CUSTOMER VALIDATION

- Chemosphere. 2019 Jun;225:378-387.

See more customer validations on www.MedChemExpress.com

REFERENCES

[1]. AGUIRRE M, [Sulfadimethoxine in various infections. Results]. Rev Clin Esp. 1961 Sep 30;82:394-9.

[2]. Guerard JJ, et al. Photochemical fate of sulfadimethoxine in aquaculture waters. Environ Sci Technol. 2009 Nov 15;43(22):8587-92.

Caution: Product has not been fully validated for medical applications. For research use only.

Tel: 609-228-6898

Fax: 609-228-5909

E-mail: tech@MedChemExpress.com

Address: 1 Deer Park Dr, Suite Q, Monmouth Junction, NJ 08852, USA