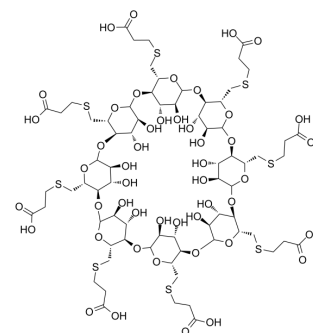


Sugammadex

Cat. No.:	HY-B0079A
CAS No.:	343306-71-8
Molecular Formula:	$C_{72}H_{112}O_{48}S_8$
Molecular Weight:	2002.15
Target:	Others
Pathway:	Others
Storage:	Please store the product under the recommended conditions in the Certificate of Analysis.



BIOLOGICAL ACTIVITY

Description	Sugammadex is a synthetic γ -cyclodextrin derivative, and acts as a reversal agent for neuromuscular block. Sugammadex shows nephroprotective effect in ischemia-reperfusion injury ^{[1][2]} .
In Vivo	Sugammadex (100 mg/kg, IV, once) has a nephroprotective effect when given at the beginning of reperfusion after one hour of ischemic condition on rats ^[2] . MCE has not independently confirmed the accuracy of these methods. They are for reference only.

REFERENCES

- [1]. de Boer HD, et al. Sugammadex, a new reversal agent for neuromuscular block induced by rocuronium in the anaesthetized Rhesus monkey. *Br J Anaesth.* 2006 Apr;96(4):473-9. Epub 2006 Feb 7.
- [2]. Tercan M, Yılmaz İnal F, Seneldir H, Kocoglu H. Nephroprotective Efficacy of Sugammadex in Ischemia-Reperfusion Injury: An Experimental Study in a Rat Model. *Cureus.* 2021 Jun 17;13(6):e15726.

Caution: Product has not been fully validated for medical applications. For research use only.

Tel: 609-228-6898

Fax: 609-228-5909

E-mail: tech@MedChemExpress.com

Address: 1 Deer Park Dr, Suite Q, Monmouth Junction, NJ 08852, USA