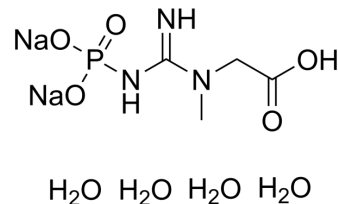


Sodium creatine phosphate dibasic tetrahydrate

Cat. No.:	HY-D0885A
CAS No.:	71519-72-7
Molecular Formula:	C ₄ H ₁₆ N ₃ Na ₂ O ₉ P
Molecular Weight:	327.14
Target:	Endogenous Metabolite
Pathway:	Metabolic Enzyme/Protease
Storage:	4°C, sealed storage, away from moisture * In solvent : -80°C, 6 months; -20°C, 1 month (sealed storage, away from moisture)



BIOLOGICAL ACTIVITY

Description	Phosphocreatine disodium tetrahydrate, primarily found in the skeletal muscles of vertebrates and one of organic compounds known as alpha amino acids and derivatives, is a substrate for the determination of creatine kinase and used to regenerate ATP during skeletal muscle contraction ^[1] .
IC₅₀ & Target	Human Endogenous Metabolite

CUSTOMER VALIDATION

- Toxicol Appl Pharmacol. 9 March 2022, 115971.

See more customer validations on www.MedChemExpress.com

REFERENCES

[1]. Feldman EB, et al. Creatine: a dietary supplement and ergogenic aid. Nutr Rev. 1999 Feb;57(2):45-50.

Caution: Product has not been fully validated for medical applications. For research use only.

Tel: 609-228-6898

Fax: 609-228-5909

E-mail: tech@MedChemExpress.com

Address: 1 Deer Park Dr, Suite Q, Monmouth Junction, NJ 08852, USA