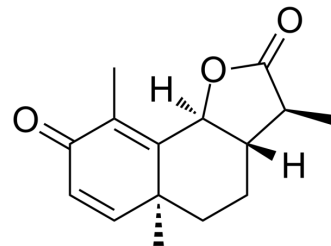


Santonin

Cat. No.:	HY-B1761		
CAS No.:	481-06-1		
Molecular Formula:	C ₁₅ H ₁₈ O ₃		
Molecular Weight:	246.3		
Target:	Parasite		
Pathway:	Anti-infection		
Storage:	Powder	-20°C	3 years
		4°C	2 years
	In solvent	-80°C	2 years
		-20°C	1 year



SOLVENT & SOLUBILITY

In Vitro	DMSO : 50 mg/mL (203.00 mM; ultrasonic and warming and heat to 60°C)				
		Solvent Concentration	Mass 1 mg	5 mg	10 mg
	Preparing Stock Solutions	1 mM	4.0601 mL	20.3004 mL	40.6009 mL
		5 mM	0.8120 mL	4.0601 mL	8.1202 mL
		10 mM	0.4060 mL	2.0300 mL	4.0601 mL
Please refer to the solubility information to select the appropriate solvent.					
In Vivo	1. Add each solvent one by one: 10% DMSO >> 40% PEG300 >> 5% Tween-80 >> 45% saline Solubility: ≥ 2.5 mg/mL (10.15 mM); Clear solution				
	2. Add each solvent one by one: 10% DMSO >> 90% corn oil Solubility: ≥ 2.5 mg/mL (10.15 mM); Clear solution				

BIOLOGICAL ACTIVITY

Description	Santonin is an active principle of the plant <i>Artemisia cina</i> , which is formerly used to treat worms ^[1] .		
In Vivo	Santonin (60 and 120 mg/kg, s.c) has anti-inflammatory activity on carrageenan (HY-125474) -induced edema in rat paws ^[2] . MCE has not independently confirmed the accuracy of these methods. They are for reference only.		
	Animal Model:	Carrageenan-induced paw edema in rats ^[2]	
	Dosage:	15, 30, 60 and 120 mg/kg	

Administration:	Subcutaneous injection (s.c.), single dose
Result:	Inhibited cotton pellet granuloma formation with an inhibition of 55% at 120 mg/kg.

REFERENCES

- [1]. M M al-Harb, et al. Studies on the antiinflammatory, antipyretic and analgesic activities of santonin. Jpn J Pharmacol. 1994, 64, 3.
- [2]. Sakipova Z, et al. Quantification of santonin in eight species of Artemisia from Kazakhstan by means of HPLC-UV: Method development and validation. PLoS One. 2017 Mar 16;12(3):e0173714.
-

Caution: Product has not been fully validated for medical applications. For research use only.

Tel: 609-228-6898 Fax: 609-228-5909 E-mail: tech@MedChemExpress.com

Address: 1 Deer Park Dr, Suite Q, Monmouth Junction, NJ 08852, USA