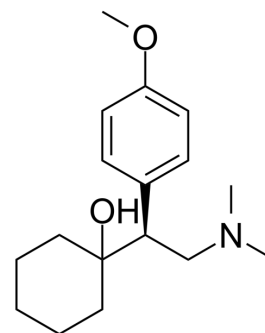


(S)-Venlafaxine

Cat. No.:	HY-B0196B
CAS No.:	93413-44-6
Molecular Formula:	C ₁₇ H ₂₇ NO ₂
Molecular Weight:	277.4
Target:	Serotonin Transporter
Pathway:	Neuronal Signaling
Storage:	Please store the product under the recommended conditions in the Certificate of Analysis.



BIOLOGICAL ACTIVITY

Description

(S)-Venlafaxine is the (S)-configuration of Venlafaxine. Venlafaxine is an orally active, potent serotonin (5-HT)/norepinephrine (NE) reuptake dual inhibitor. Venlafaxine is an antidepressant agent^[1].

REFERENCES

[1]. Bymaster FP, et al. Comparative affinity of duloxetine and venlafaxine for serotonin and norepinephrine transporters in vitro and in vivo, human serotonin receptor subtypes, and other neuronal receptors. *Neuropsychopharmacology*. 2001 Dec;25(6):871-80.

Caution: Product has not been fully validated for medical applications. For research use only.

Tel: 609-228-6898

Fax: 609-228-5909

E-mail: tech@MedChemExpress.com

Address: 1 Deer Park Dr, Suite Q, Monmouth Junction, NJ 08852, USA