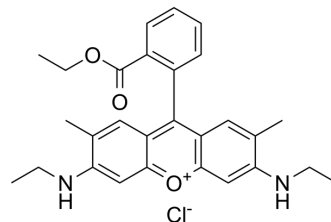


## Rhodamine 6G (indicator)

<b>Cat. No.:</b>	HY-D0309A
<b>CAS No.:</b>	989-38-8
<b>Molecular Formula:</b>	C <sub>28</sub> H <sub>31</sub> ClN <sub>2</sub> O <sub>3</sub>
<b>Molecular Weight:</b>	479.01
<b>Target:</b>	Biochemical Assay Reagents
<b>Pathway:</b>	Others
<b>Storage:</b>	Please store the product under the recommended conditions in the Certificate of Analysis.



### BIOLOGICAL ACTIVITY

#### Description

Rhodamine 6G, indicator is a biochemical reagent that can be used as a biological material or organic compound for life science related research.

**Caution: Product has not been fully validated for medical applications. For research use only.**

Tel: 609-228-6898

Fax: 609-228-5909

E-mail: [tech@MedChemExpress.com](mailto:tech@MedChemExpress.com)

Address: 1 Deer Park Dr, Suite Q, Monmouth Junction, NJ 08852, USA