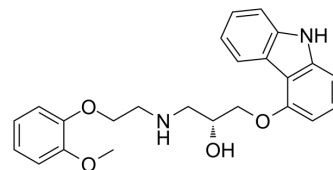


## (R)-Carvedilol

<b>Cat. No.:</b>	HY-B0006C		
<b>CAS No.:</b>	95093-99-5		
<b>Molecular Formula:</b>	C <sub>24</sub> H <sub>26</sub> N <sub>2</sub> O <sub>4</sub>		
<b>Molecular Weight:</b>	406.47		
<b>Target:</b>	Adrenergic Receptor		
<b>Pathway:</b>	GPCR/G Protein; Neuronal Signaling		
<b>Storage:</b>	Powder	-20°C	3 years
		4°C	2 years
	In solvent	-80°C	2 years
		-20°C	1 year



### SOLVENT & SOLUBILITY

<b>In Vitro</b>	DMSO : 220 mg/mL (541.25 mM; Need ultrasonic)				
		Solvent Concentration	Mass 1 mg	5 mg	10 mg
	<b>Preparing Stock Solutions</b>	1 mM	2.4602 mL	12.3010 mL	24.6021 mL
		5 mM	0.4920 mL	2.4602 mL	4.9204 mL
10 mM		0.2460 mL	1.2301 mL	2.4602 mL	
Please refer to the solubility information to select the appropriate solvent.					
<b>In Vivo</b>	<ol style="list-style-type: none"> <li>Add each solvent one by one: 10% DMSO &gt;&gt; 40% PEG300 &gt;&gt; 5% Tween-80 &gt;&gt; 45% saline Solubility: ≥ 5.5 mg/mL (13.53 mM); Clear solution</li> <li>Add each solvent one by one: 10% DMSO &gt;&gt; 90% (20% SBE-β-CD in saline) Solubility: 5.5 mg/mL (13.53 mM); Suspended solution; Need ultrasonic</li> <li>Add each solvent one by one: 10% DMSO &gt;&gt; 90% corn oil Solubility: ≥ 5.5 mg/mL (13.53 mM); Clear solution</li> </ol>				

### BIOLOGICAL ACTIVITY

<b>Description</b>	(R)-Carvedilol ((R)-BM 14190), the R-enantiomer of Carvedilol, is a non-selective β/α-1 blocker. (R)-Carvedilol exerts protection against the vascular or cardiac toxicity of Doxorubicin (DOX) <sup>[1]</sup> .
<b>IC<sub>50</sub> &amp; Target</b>	β/α-1 adrenergic receptor <sup>[1]</sup>

### REFERENCES

**Caution: Product has not been fully validated for medical applications. For research use only.**

Tel: 609-228-6898

Fax: 609-228-5909

E-mail: [tech@MedChemExpress.com](mailto:tech@MedChemExpress.com)

Address: 1 Deer Park Dr, Suite Q, Monmouth Junction, NJ 08852, USA