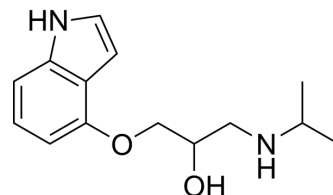


## Pindolol

|                           |   |                               |
|---------------------------|---|-------------------------------|
| <b>Cat. No.:</b>          | HY-B0982  |                               |
| <b>CAS No.:</b>           | 13523-86-9  |                               |
| <b>Molecular Formula:</b> | C <sub>14</sub> H <sub>20</sub> N <sub>2</sub> O <sub>2</sub> |                               |
| <b>Molecular Weight:</b>  | 248.32  |                               |
| <b>Target:</b>            | 5-HT Receptor; Adrenergic Receptor                            |                               |
| <b>Pathway:</b>           | GPCR/G Protein; Neuronal Signaling                            |                               |
| <b>Storage:</b>           | Powder  | -20°C 3 years<br>4°C 2 years  |
|                           | In solvent  | -80°C 2 years<br>-20°C 1 year |



### SOLVENT & SOLUBILITY

#### In Vitro

DMSO : 50 mg/mL (201.35 mM; Need ultrasonic)

| Concentration             | Solvent | Mass | 1 mg      | 5 mg       | 10 mg      |
|---------------------------|---------|------|-----------|------------|------------|
|                           |         |      | 1 mg      | 5 mg       | 10 mg      |
| Preparing Stock Solutions | 1 mM    |      | 4.0271 mL | 20.1353 mL | 40.2706 mL |
|                           | 5 mM    |      | 0.8054 mL | 4.0271 mL  | 8.0541 mL  |
|                           | 10 mM   |      | 0.4027 mL | 2.0135 mL  | 4.0271 mL  |

Please refer to the solubility information to select the appropriate solvent.

#### In Vivo

- Add each solvent one by one: 10% DMSO >> 40% PEG300 >> 5% Tween-80 >> 45% saline  
Solubility: ≥ 2.08 mg/mL (8.38 mM); Clear solution
- Add each solvent one by one: 10% DMSO >> 90% (20% SBE-β-CD in saline)  
Solubility: ≥ 2.08 mg/mL (8.38 mM); Clear solution
- Add each solvent one by one: 10% DMSO >> 90% corn oil  
Solubility: ≥ 2.08 mg/mL (8.38 mM); Clear solution

### BIOLOGICAL ACTIVITY

#### Description

Pindolol (LB-46) is a nonselective β-blocker with partial beta-adrenergic receptor agonist activity, also functions as a 5-HT<sub>1A</sub> receptor weak partial antagonist (K<sub>i</sub>=33nM).

#### IC<sub>50</sub> & Target

5-HT<sub>1A</sub> Receptor

### CUSTOMER VALIDATION

- 
- ACS Omega. August 8, 2022.
  - J Pharmaceut Biomed. 2020, 113870.

See more customer validations on [www.MedChemExpress.com](http://www.MedChemExpress.com)

**Caution: Product has not been fully validated for medical applications. For research use only.**

Tel: 609-228-6898

Fax: 609-228-5909

E-mail: [tech@MedChemExpress.com](mailto:tech@MedChemExpress.com)

Address: 1 Deer Park Dr, Suite Q, Monmouth Junction, NJ 08852, USA