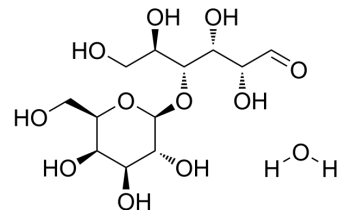


Pharmatose DCL 14

Cat. No.:	HY-B1673		
CAS No.:	64044-51-5		
Molecular Formula:	C ₁₂ H ₂₄ O ₁₂		
Molecular Weight:	360.31		
Target:	Endogenous Metabolite		
Pathway:	Metabolic Enzyme/Protease		
Storage:	Powder	-20°C	3 years
		4°C	2 years
	In solvent	-80°C	6 months
		-20°C	1 month



SOLVENT & SOLUBILITY

In Vitro

H₂O : 62.5 mg/mL (173.46 mM; ultrasonic and warming and heat to 60°C)
 DMSO : 50 mg/mL (138.77 mM; Need ultrasonic)

Preparing Stock Solutions	Solvent Concentration	Mass		
		1 mg	5 mg	10 mg
	1 mM	2.7754 mL	13.8769 mL	27.7539 mL
	5 mM	0.5551 mL	2.7754 mL	5.5508 mL
	10 mM	0.2775 mL	1.3877 mL	2.7754 mL

Please refer to the solubility information to select the appropriate solvent.

In Vivo

- Add each solvent one by one: 10% DMSO >> 40% PEG300 >> 5% Tween-80 >> 45% saline
 Solubility: ≥ 2.5 mg/mL (6.94 mM); Clear solution
- Add each solvent one by one: 10% DMSO >> 90% (20% SBE-β-CD in saline)
 Solubility: ≥ 2.5 mg/mL (6.94 mM); Clear solution
- Add each solvent one by one: 10% DMSO >> 90% corn oil
 Solubility: ≥ 2.5 mg/mL (6.94 mM); Clear solution

BIOLOGICAL ACTIVITY

Description

Pharmatose DCL 14 is an endogenous metabolite.

Caution: Product has not been fully validated for medical applications. For research use only.

Tel: 609-228-6898

Fax: 609-228-5909

E-mail: tech@MedChemExpress.com

Address: 1 Deer Park Dr, Suite Q, Monmouth Junction, NJ 08852, USA