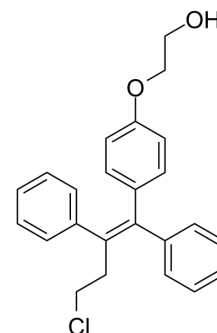


Ospemifene

Cat. No.:	HY-B0723		
CAS No.:	128607-22-7		
Molecular Formula:	C ₂₄ H ₂₃ ClO ₂		
Molecular Weight:	378.89		
Target:	Estrogen Receptor/ERR		
Pathway:	Vitamin D Related/Nuclear Receptor		
Storage:	Powder	-20°C	3 years
		4°C	2 years
	In solvent	-80°C	2 years
		-20°C	1 year



SOLVENT & SOLUBILITY

In Vitro

DMSO : ≥ 100 mg/mL (263.93 mM)
 * "≥" means soluble, but saturation unknown.

Preparing Stock Solutions	Solvent Concentration	Mass		
		1 mg	5 mg	10 mg
	1 mM	2.6393 mL	13.1964 mL	26.3929 mL
	5 mM	0.5279 mL	2.6393 mL	5.2786 mL
	10 mM	0.2639 mL	1.3196 mL	2.6393 mL

Please refer to the solubility information to select the appropriate solvent.

In Vivo

- Add each solvent one by one: 10% DMSO >> 40% PEG300 >> 5% Tween-80 >> 45% saline
 Solubility: ≥ 2.5 mg/mL (6.60 mM); Clear solution
- Add each solvent one by one: 10% DMSO >> 90% corn oil
 Solubility: ≥ 2.5 mg/mL (6.60 mM); Clear solution

BIOLOGICAL ACTIVITY

Description

Ospemifene is a non-estrogen selective estrogen receptor modulator (SERM), with K_s of 380 and 410 nM for estrogen receptor α (ERα) and ERβ, respectively. Ospemifene can be used for the research of vaginal atrophy and breast cancer^{[1][2]}.

CUSTOMER VALIDATION

- J Med Chem. 2020 Oct 8;63(19):11085-11099.

-
- Research Square Preprint. 2020 Nov 4;rs.3.rs-100914.

See more customer validations on www.MedChemExpress.com

REFERENCES

- [1]. Qiang Qv.et al.Selective estrogenic effects of a novel triphenylethylene compound, FC1271a, on bone, cholesterol level, and reproductive tissues in intact and ovariectomized rats. *Endocrinology*.Feb;141(2):809-20. 25. (2000).
- [2]. Tracy L. Taras et al.In vitro and in vivo biologic effects of Ospemifene (FC-1271a) in breast cancer. *The Journal of Steroid Biochemistry and Molecular Biology* 77(4-5):271-9,(2001).
- [3]. Unkila M, et, al. Vaginal effects of ospemifene in the ovariectomized rat preclinical model of menopause. *J Steroid Biochem Mol Biol*. 2013 Nov;138:107-15.
- [4]. Bruyniks N, et, al. Systematic indirect comparison of ospemifene versus local estrogens for vulvar and vaginal atrophy. *Climacteric*. 2017 Jun; 20(3): 195-204.
-

Caution: Product has not been fully validated for medical applications. For research use only.

Tel: 609-228-6898

Fax: 609-228-5909

E-mail: tech@MedChemExpress.com

Address: 1 Deer Park Dr, Suite Q, Monmouth Junction, NJ 08852, USA