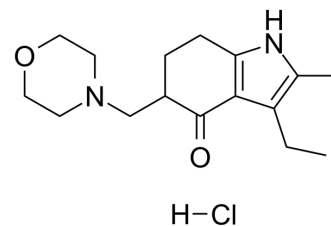


Molindone hydrochloride

| | |
|--------------------|--|
| Cat. No.: | HY-B1017 |
| CAS No.: | 15622-65-8 |
| Molecular Formula: | C ₁₆ H ₂₅ ClN ₂ O ₂ |
| Molecular Weight: | 312.83 |
| Target: | Dopamine Receptor |
| Pathway: | GPCR/G Protein; Neuronal Signaling |
| Storage: | 4°C, sealed storage, away from moisture * In solvent : -80°C, 6 months; -20°C, 1 month (sealed storage, away from moisture) |



SOLVENT & SOLUBILITY

In Vitro

H₂O : 100 mg/mL (319.66 mM; Need ultrasonic)
DMSO : 17.5 mg/mL (55.94 mM; Need ultrasonic and warming)

| Concentration | Solvent | Mass | 1 mg | 5 mg | 10 mg |
|---------------|---------|------|-----------|-----------|------------|
| | | | 1 mM | 3.1966 mL | 15.9831 mL |
| 5 mM | | | 0.6393 mL | 3.1966 mL | 6.3932 mL |
| 10 mM | | | 0.3197 mL | 1.5983 mL | 3.1966 mL |

Please refer to the solubility information to select the appropriate solvent.

BIOLOGICAL ACTIVITY

Description

Molindone hydrochloride (EN-1733A) is a therapeutic antipsychotic, used in the treatment of schizophrenia, works by blocking the effects of dopamine in the brain, leading to diminished psychoses.

Caution: Product has not been fully validated for medical applications. For research use only.

Tel: 609-228-6898

Fax: 609-228-5909

E-mail: tech@MedChemExpress.com

Address: 1 Deer Park Dr, Suite Q, Monmouth Junction, NJ 08852, USA