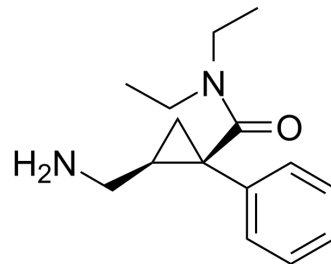


Milnacipran

Cat. No.:	HY-B0168
CAS No.:	92623-85-3
Molecular Formula:	C ₁₅ H ₂₂ N ₂ O
Molecular Weight:	246.35
Target:	Serotonin Transporter
Pathway:	Neuronal Signaling
Storage:	Please store the product under the recommended conditions in the Certificate of Analysis.



BIOLOGICAL ACTIVITY

Description

Milnacipran is a serotonin-norepinephrine reuptake inhibitor (SNRI) used in the clinical treatment of fibromyalgia. Target: SNRI Milnacipran (Ixel, Savella, Dalcipran, Toledomin) is a serotonin-norepinephrine reuptake inhibitor (SNRI) used in the clinical treatment of fibromyalgia. It is not approved for the clinical treatment of major depressive disorder in the USA, but it is in other countries. Milnacipran inhibits the reuptake of serotonin and norepinephrine in an approximately 1:3 ratio, respectively; in practical use this means a relatively balanced action upon both neurotransmitters. Increasing both neurotransmitters concentration simultaneously works synergistically to treat both depression and fibromyalgia. Milnacipran exerts no significant actions on H₁, α₁, D₁, D₂, and mACh receptors, as well as on benzodiazepine and opioid binding sites. Milnacipran is well absorbed after oral dosing and has a bioavailability of 85%. Meals do not have an influence on the rapidity and extent of absorption. Peak plasma concentrations are reached 2 hours after oral dosing. The elimination half-life of 8 hours is not increased by liver impairment and old age, but by significant renal disease. Milnacipran is conjugated to the inactive glucuronide and excreted in the urine as unchanged drug and conjugate. Only traces of active metabolites are found.

REFERENCES

- [1]. Moret C, et al. Biochemical profile of midalcipran (F 2207), 1-phenyl-1-diethyl-aminocarbonyl-2-aminomethyl-cyclopropane (Z) hydrochloride, a potential fourth generation antidepressant drug. *Neuropharmacology*. 1985 Dec;24(12):1211-9.
- [2]. Briley M, et al. Preclinical pharmacology of milnacipran. *Int Clin Psychopharmacol*. 1996 Sep;11 Suppl 4:9-14.

Caution: Product has not been fully validated for medical applications. For research use only.

Tel: 609-228-6898

Fax: 609-228-5909

E-mail: tech@MedChemExpress.com

Address: 1 Deer Park Dr, Suite Q, Monmouth Junction, NJ 08852, USA