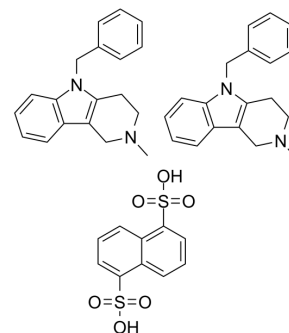


Mebhydrolin napadisylate

Cat. No.:	HY-B1303
CAS No.:	6153-33-9
Molecular Formula:	C ₄₈ H ₄₈ N ₄ O ₆ S ₂
Molecular Weight:	841.05
Target:	Histamine Receptor
Pathway:	GPCR/G Protein; Immunology/Inflammation; Neuronal Signaling
Storage:	4°C, sealed storage, away from moisture * In solvent : -80°C, 6 months; -20°C, 1 month (sealed storage, away from moisture)



SOLVENT & SOLUBILITY

In Vitro	DMSO : 5.56 mg/mL (6.61 mM; ultrasonic and warming and heat to 60°C)					
	Preparing Stock Solutions	Solvent Concentration	Mass	1 mg	5 mg	10 mg
		1 mM		1.1890 mL	5.9450 mL	11.8899 mL
		5 mM		0.2378 mL	1.1890 mL	2.3780 mL
		10 mM		---	---	---
Please refer to the solubility information to select the appropriate solvent.						
In Vivo	1. Add each solvent one by one: 10% DMSO >> 40% PEG300 >> 5% Tween-80 >> 45% saline Solubility: ≥ 0.56 mg/mL (0.67 mM); Clear solution					
	2. Add each solvent one by one: 10% DMSO >> 90% (20% SBE-β-CD in saline) Solubility: ≥ 0.56 mg/mL (0.67 mM); Clear solution					
	3. Add each solvent one by one: 10% DMSO >> 90% corn oil Solubility: ≥ 0.56 mg/mL (0.67 mM); Clear solution					

BIOLOGICAL ACTIVITY

Description	Mebhydrolin napadisylate is a specific histamine H ₁ receptor antagonist.
IC₅₀ & Target	Histamine H1-receptor ^[1]
In Vitro	Mebhydrolin is a specific histamine H ₁ -receptor antagonist and comparing it with the effects of chlorpromazine, the archetypical phenothiazine ^[1] . Mebhydrolin exerts an antihistaminic effect over the period of the ethanol interaction study ^[2] . MCE has not independently confirmed the accuracy of these methods. They are for reference only.

REFERENCES

- [1]. O'Neill PA, et al. Chlorpromazine-a specific effect on breathlessness? Br J Clin Pharmacol. 1985 Jun;19(6):793-7.
- [2]. Franks HM, et al. Interaction between ethanol and antihistamines: 3. Mebhydrolin. Med J Aust. 1981 Oct 31;2(9):477-9.
-

Caution: Product has not been fully validated for medical applications. For research use only.

Tel: 609-228-6898

Fax: 609-228-5909

E-mail: tech@MedChemExpress.com

Address: 1 Deer Park Dr, Suite Q, Monmouth Junction, NJ 08852, USA