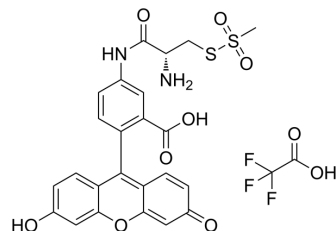


MTSEA-Fluorescein

Cat. No.:	HY-D1528
CAS No.:	1356019-48-1
Molecular Formula:	C ₂₆ H ₂₁ F ₃ N ₂ O ₁₀ S ₂
Molecular Weight:	642.58
Target:	Sodium Channel
Pathway:	Membrane Transporter/Ion Channel
Storage:	Please store the product under the recommended conditions in the Certificate of Analysis.



BIOLOGICAL ACTIVITY

Description

MTSEA-Fluorescein is a fluorescent probe that can be used for ion channel research^[1].

REFERENCES

[1]. Adams CM, et al. Protons activate brain Na⁺ channel 1 by inducing a conformational change that exposes a residue associated with neurodegeneration. J Biol Chem. 1998 Nov 13;273(46):30204-7.

Caution: Product has not been fully validated for medical applications. For research use only.

Tel: 609-228-6898

Fax: 609-228-5909

E-mail: tech@MedChemExpress.com

Address: 1 Deer Park Dr, Suite Q, Monmouth Junction, NJ 08852, USA