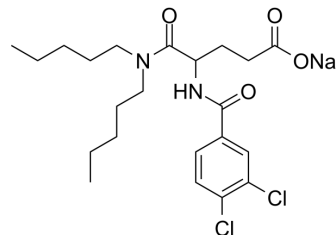


## Lorglumide sodium salt

<b>Cat. No.:</b>	HY-B1439B
<b>CAS No.:</b>	1021868-76-7
<b>Molecular Formula:</b>	C <sub>22</sub> H <sub>31</sub> Cl <sub>2</sub> N <sub>2</sub> NaO <sub>4</sub>
<b>Molecular Weight:</b>	481.39
<b>Target:</b>	Cholecystokinin Receptor
<b>Pathway:</b>	GPCR/G Protein; Neuronal Signaling
<b>Storage:</b>	-20°C, sealed storage, away from moisture * In solvent : -80°C, 6 months; -20°C, 1 month (sealed storage, away from moisture)



### SOLVENT & SOLUBILITY

#### In Vitro

H<sub>2</sub>O : ≥ 100 mg/mL (207.73 mM)  
 DMSO : 100 mg/mL (207.73 mM; Need ultrasonic)  
 \* "≥" means soluble, but saturation unknown.

Preparing Stock Solutions	Solvent Concentration	Mass		
		1 mg	5 mg	10 mg
	1 mM	2.0773 mL	10.3866 mL	20.7732 mL
	5 mM	0.4155 mL	2.0773 mL	4.1546 mL
	10 mM	0.2077 mL	1.0387 mL	2.0773 mL

Please refer to the solubility information to select the appropriate solvent.

#### In Vivo

- Add each solvent one by one: PBS  
Solubility: 50 mg/mL (103.87 mM); Clear solution; Need ultrasonic
- Add each solvent one by one: 10% DMSO >> 90% (20% SBE-β-CD in saline)  
Solubility: 2.08 mg/mL (4.32 mM); Suspended solution; Need ultrasonic
- Add each solvent one by one: 10% DMSO >> 90% corn oil  
Solubility: ≥ 2.08 mg/mL (4.32 mM); Clear solution

### BIOLOGICAL ACTIVITY

<b>Description</b>	Lorglumide sodium salt (CR-1409 sodium salt) is a potent cholecystokinin (CCK) receptor antagonist <sup>[1]</sup> .
<b>IC<sub>50</sub> &amp; Target</b>	CCK <sup>[1]</sup>

### REFERENCES

---

[1]. Scarpignato C, et al. Effect of a new potent CCK antagonist, lorglumide, on caerulein- and bombesin-induced pancreatic secretion and growth in the rat. Br J Pharmacol. 1989 Mar;96(3):661-9.

---

**Caution: Product has not been fully validated for medical applications. For research use only.**

Tel: 609-228-6898

Fax: 609-228-5909

E-mail: [tech@MedChemExpress.com](mailto:tech@MedChemExpress.com)

Address: 1 Deer Park Dr, Suite Q, Monmouth Junction, NJ 08852, USA