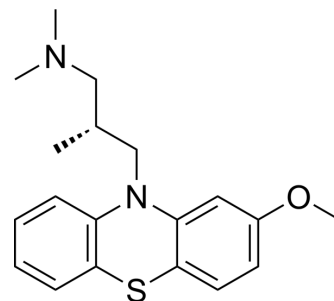


## Levomepromazine

<b>Cat. No.:</b>	HY-B1693	
<b>CAS No.:</b>	60-99-1	
<b>Molecular Formula:</b>	C <sub>19</sub> H <sub>24</sub> N <sub>2</sub> OS	
<b>Molecular Weight:</b>	328.47	
<b>Target:</b>	5-HT Receptor; Dopamine Receptor	
<b>Pathway:</b>	GPCR/G Protein; Neuronal Signaling	
<b>Storage:</b>	Powder	-20°C 3 years 4°C 2 years
	In solvent	-80°C 6 months -20°C 1 month



### SOLVENT & SOLUBILITY

#### In Vitro

DMSO : 41.67 mg/mL (126.86 mM; ultrasonic and warming and heat to 60°C)

Preparing Stock Solutions	Solvent Concentration	Mass		
		1 mg	5 mg	10 mg
	1 mM	3.0444 mL	15.2221 mL	30.4442 mL
	5 mM	0.6089 mL	3.0444 mL	6.0888 mL
	10 mM	0.3044 mL	1.5222 mL	3.0444 mL

Please refer to the solubility information to select the appropriate solvent.

#### In Vivo

- Add each solvent one by one: 10% DMSO >> 40% PEG300 >> 5% Tween-80 >> 45% saline  
Solubility: ≥ 1.43 mg/mL (4.35 mM); Clear solution
- Add each solvent one by one: 10% DMSO >> 90% (20% SBE-β-CD in saline)  
Solubility: ≥ 1.43 mg/mL (4.35 mM); Clear solution
- Add each solvent one by one: 10% DMSO >> 90% corn oil  
Solubility: ≥ 1.43 mg/mL (4.35 mM); Clear solution

### BIOLOGICAL ACTIVITY

#### Description

Levomepromazine (Methotrimeprazine) is an orally available neuroleptic agent, which is commonly used to relieve nausea and vomiting in palliative care settings. Levomepromazine has antagonist actions at multiple neurotransmitter receptor sites, including dopaminergic, cholinergic, serotonin and histamine receptors<sup>[1]</sup>.

### CUSTOMER VALIDATION

- 
- Br J Pharmacol. 2022 Jul;179(14):3675-3692.

See more customer validations on [www.MedChemExpress.com](http://www.MedChemExpress.com)

## REFERENCES

---

- [1]. Cox L, et al. Levomepromazine for nausea and vomiting in palliative care. Cochrane Database Syst Rev. 2015 Nov 2;(11):CD009420.
- [2]. Sivaraman P, et al. Levomepromazine for schizophrenia. Cochrane Database Syst Rev. 2010 Oct 6;(10):CD007779.
- 

**Caution: Product has not been fully validated for medical applications. For research use only.**

Tel: 609-228-6898

Fax: 609-228-5909

E-mail: [tech@MedChemExpress.com](mailto:tech@MedChemExpress.com)

Address: 1 Deer Park Dr, Suite Q, Monmouth Junction, NJ 08852, USA