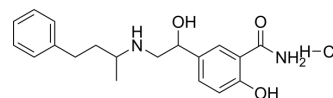


Labetalol hydrochloride (Standard)

Cat. No.:	HY-B1108R
CAS No.:	32780-64-6
Molecular Formula:	C ₁₉ H ₂₅ ClN ₂ O ₃
Molecular Weight:	364.87
Target:	Adrenergic Receptor
Pathway:	GPCR/G Protein; Neuronal Signaling
Storage:	4°C, sealed storage, away from moisture and light * In solvent : -80°C, 6 months; -20°C, 1 month (sealed storage, away from moisture and light)



SOLVENT & SOLUBILITY

In Vitro

DMSO : ≥ 100 mg/mL (274.07 mM)
 H₂O : 20 mg/mL (54.81 mM; Need ultrasonic)
 * "≥" means soluble, but saturation unknown.

Concentration	Mass		
	1 mg	5 mg	10 mg
1 mM	2.7407 mL	13.7035 mL	27.4070 mL
5 mM	0.5481 mL	2.7407 mL	5.4814 mL
10 mM	0.2741 mL	1.3704 mL	2.7407 mL

Please refer to the solubility information to select the appropriate solvent.

BIOLOGICAL ACTIVITY

Description

Labetalol (hydrochloride) (Standard) is the analytical standard of Labetalol (hydrochloride). This product is intended for research and analytical applications.

CUSTOMER VALIDATION

- J Med Chem. 2021 Mar 11;64(5):2725-2738.
- J Pharmaceut Biomed. 2020, 113870.
- Int J Clin Pract. 2021 Jun 12;e14509.

See more customer validations on www.MedChemExpress.com

Caution: Product has not been fully validated for medical applications. For research use only.

Tel: 609-228-6898

Fax: 609-228-5909

E-mail: tech@MedChemExpress.com

Address: 1 Deer Park Dr, Suite Q, Monmouth Junction, NJ 08852, USA