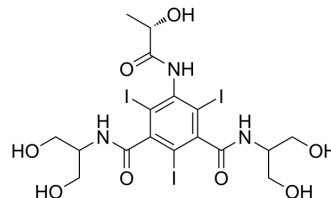


## Iopamidol

<b>Cat. No.:</b>	HY-B0684
<b>CAS No.:</b>	60166-93-0
<b>Molecular Formula:</b>	C <sub>17</sub> H <sub>22</sub> I <sub>3</sub> N <sub>3</sub> O <sub>8</sub>
<b>Molecular Weight:</b>	777.09
<b>Target:</b>	Biochemical Assay Reagents
<b>Pathway:</b>	Others
<b>Storage:</b>	4°C, protect from light * In solvent : -80°C, 6 months; -20°C, 1 month (protect from light)



### SOLVENT & SOLUBILITY

#### In Vitro

H<sub>2</sub>O : 100 mg/mL (128.69 mM; Need ultrasonic)  
DMSO : 50 mg/mL (64.34 mM; Need ultrasonic)

Preparing Stock Solutions	Solvent Concentration	Mass	1 mg	5 mg	10 mg
	1 mM		1.2869 mL	6.4343 mL	12.8685 mL
	5 mM		0.2574 mL	1.2869 mL	2.5737 mL
	10 mM		0.1287 mL	0.6434 mL	1.2869 mL

Please refer to the solubility information to select the appropriate solvent.

#### In Vivo

- Add each solvent one by one: PBS  
Solubility: 110 mg/mL (141.55 mM); Clear solution; Need ultrasonic
- Add each solvent one by one: 10% DMSO >> 40% PEG300 >> 5% Tween-80 >> 45% saline  
Solubility: ≥ 2.08 mg/mL (2.68 mM); Clear solution
- Add each solvent one by one: 10% DMSO >> 90% (20% SBE-β-CD in saline)  
Solubility: ≥ 2.08 mg/mL (2.68 mM); Clear solution
- Add each solvent one by one: 10% DMSO >> 90% corn oil  
Solubility: ≥ 2.08 mg/mL (2.68 mM); Clear solution

### BIOLOGICAL ACTIVITY

#### Description

Iopamidol is a nonionic, X-Ray iodinated contrast agent (CA) for a wide variety of diagnostic applications. Iopamidol contains amide and hydroxyl functionalities that can be exploited for the generation of the chemical exchange saturation transfer (CEST) contrast<sup>[1]</sup>.

#### In Vivo

Iopamidol as a responsive MRI-chemical exchange saturation transfer contrast agent can be used for pH mapping of kidneys [1].

---

MCE has not independently confirmed the accuracy of these methods. They are for reference only.

## REFERENCES

---

[1]. Longo DL, et. al. Iopamidol as a responsive MRI-chemical exchange saturation transfer contrast agent for pH mapping of kidneys: In vivo studies in mice at 7 T. Magn Reson Med. 2011 Jan;65(1):202-11.

---

**Caution: Product has not been fully validated for medical applications. For research use only.**

Tel: 609-228-6898

Fax: 609-228-5909

E-mail: [tech@MedChemExpress.com](mailto:tech@MedChemExpress.com)

Address: 1 Deer Park Dr, Suite Q, Monmouth Junction, NJ 08852, USA