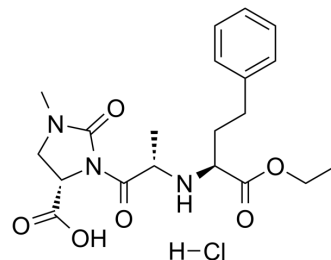


## Imidapril hydrochloride

<b>Cat. No.:</b>	HY-B1451
<b>CAS No.:</b>	89396-94-1
<b>Molecular Formula:</b>	C <sub>20</sub> H <sub>28</sub> ClN <sub>3</sub> O <sub>6</sub>
<b>Molecular Weight:</b>	441.91
<b>Target:</b>	Angiotensin-converting Enzyme (ACE); MMP
<b>Pathway:</b>	Metabolic Enzyme/Protease
<b>Storage:</b>	4°C, sealed storage, away from moisture * In solvent : -80°C, 6 months; -20°C, 1 month (sealed storage, away from moisture)



### SOLVENT & SOLUBILITY

<b>In Vitro</b>	DMSO : 50 mg/mL (113.15 mM; Need ultrasonic)					
	H <sub>2</sub> O : 50 mg/mL (113.15 mM; Need ultrasonic)					
	<b>Preparing Stock Solutions</b>	<b>Solvent</b>	<b>Mass</b>	<b>1 mg</b>	<b>5 mg</b>	<b>10 mg</b>
		<b>Concentration</b>				
		<b>1 mM</b>		2.2629 mL	11.3145 mL	22.6290 mL
<b>5 mM</b>			0.4526 mL	2.2629 mL	4.5258 mL	
	<b>10 mM</b>		0.2263 mL	1.1315 mL	2.2629 mL	
Please refer to the solubility information to select the appropriate solvent.						
<b>In Vivo</b>	1. Add each solvent one by one: PBS Solubility: 40 mg/mL (90.52 mM); Clear solution; Need ultrasonic					
	2. Add each solvent one by one: 10% DMSO >> 40% PEG300 >> 5% Tween-80 >> 45% saline Solubility: ≥ 2.5 mg/mL (5.66 mM); Clear solution					
	3. Add each solvent one by one: 10% DMSO >> 90% (20% SBE-β-CD in saline) Solubility: ≥ 2.5 mg/mL (5.66 mM); Clear solution					
	4. Add each solvent one by one: 10% DMSO >> 90% corn oil Solubility: ≥ 2.5 mg/mL (5.66 mM); Clear solution					

### BIOLOGICAL ACTIVITY

<b>Description</b>	Imidapril hydrochloride (TA-6366) is an orally active angiotensin-converting enzyme (ACE) and MMP-9 inhibitor. Imidapril hydrochloride suppresses the conversion of angiotensin I to angiotensin II and thereby reduces total peripheral resistance and systemic blood pressure. Imidapril hydrochloride can be used for hypertension, type 1 diabetic, nephropathy and chronic heart failure research <sup>[1][2]</sup> .
<b>IC<sub>50</sub> &amp; Target</b>	MMP-9

---

## REFERENCES

[1]. Robinson DM, et al. Imidapril: a review of its use in essential hypertension, Type 1 diabetic nephropathy and chronic heart failure. *Drugs*. 2007;67(9):1359-78.

[2]. Yamamoto D, et al. Molecular mechanism of imidapril for cardiovascular protection via inhibition of MMP-9. *J Mol Cell Cardiol*. 2007 Dec;43(6):670-6.

---

**Caution: Product has not been fully validated for medical applications. For research use only.**

Tel: 609-228-6898

Fax: 609-228-5909

E-mail: [tech@MedChemExpress.com](mailto:tech@MedChemExpress.com)

Address: 1 Deer Park Dr, Suite Q, Monmouth Junction, NJ 08852, USA