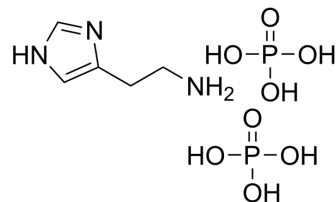


Histamine phosphate

Cat. No.:	HY-A0129
CAS No.:	51-74-1
Molecular Formula:	C ₅ H ₁₅ N ₃ O ₈ P ₂
Molecular Weight:	307.14
Target:	Histamine Receptor; Endogenous Metabolite
Pathway:	GPCR/G Protein; Immunology/Inflammation; Neuronal Signaling; Metabolic Enzyme/Protease
Storage:	4°C, sealed storage, away from moisture * In solvent : -80°C, 6 months; -20°C, 1 month (sealed storage, away from moisture)



SOLVENT & SOLUBILITY

In Vitro	H ₂ O : 100 mg/mL (325.58 mM; Need ultrasonic)				
	DMSO : 1.43 mg/mL (4.66 mM; Need ultrasonic)				
		Solvent Concentration	Mass		
			1 mg	5 mg	10 mg
Preparing Stock Solutions	1 mM		3.2558 mL	16.2792 mL	32.5584 mL
	5 mM		0.6512 mL	3.2558 mL	6.5117 mL
	10 mM		0.3256 mL	1.6279 mL	3.2558 mL
Please refer to the solubility information to select the appropriate solvent.					
In Vivo	1. Add each solvent one by one: PBS Solubility: 50 mg/mL (162.79 mM); Clear solution; Need ultrasonic				

BIOLOGICAL ACTIVITY

Description	Histamine (phosphate) diphosphate is a potent agonist of histamine receptors and vasodilator. It can activate nitric oxide synthetase.
--------------------	----------------------------------------------------------------------------------------------------------------------------------------

CUSTOMER VALIDATION

- Cancer Cell. 2022 Sep 1;S1535-6108(22)00378-6.
- Adv Sci (Weinh). 2023 Jan 15;e2203869.
- Br J Pharmacol. 2021 Jan 27.
- Mbio. 2022 Aug 24;e0200422.

-
- Microbiol Spectr. 2023 Jan 31;e0469822.

See more customer validations on www.MedChemExpress.com

REFERENCES

- [1]. Rietveld S et al. The influence of respiratory sounds on breathlessness in children with asthma: a symptom-perception approach.
- [2]. Rietveld S et al. The influence of respiratory sounds on breathlessness in children with asthma: a symptom-perception approach. Health Psychol. 1997 Nov;16(6):547-53.
-

Caution: Product has not been fully validated for medical applications. For research use only.

Tel: 609-228-6898

Fax: 609-228-5909

E-mail: tech@MedChemExpress.com

Address: 1 Deer Park Dr, Suite Q, Monmouth Junction, NJ 08852, USA