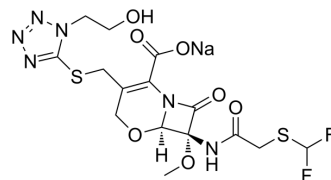


## Flomoxef sodium

<b>Cat. No.:</b>	HY-B0706A
<b>CAS No.:</b>	92823-03-5
<b>Molecular Formula:</b>	C <sub>15</sub> H <sub>17</sub> F <sub>2</sub> N <sub>6</sub> NaO <sub>7</sub> S <sub>2</sub>
<b>Molecular Weight:</b>	518.45
<b>Target:</b>	Bacterial; Antibiotic
<b>Pathway:</b>	Anti-infection
<b>Storage:</b>	-20°C, sealed storage, away from moisture and light * In solvent : -80°C, 6 months; -20°C, 1 month (sealed storage, away from moisture and light)



### SOLVENT & SOLUBILITY

#### In Vitro

H<sub>2</sub>O : 250 mg/mL (482.21 mM; Need ultrasonic)  
 DMSO : ≥ 250 mg/mL (482.21 mM)  
 \* "≥" means soluble, but saturation unknown.

Preparing Stock Solutions	Solvent Concentration	Mass		
		1 mg	5 mg	10 mg
	1 mM	1.9288 mL	9.6441 mL	19.2883 mL
	5 mM	0.3858 mL	1.9288 mL	3.8577 mL
	10 mM	0.1929 mL	0.9644 mL	1.9288 mL

Please refer to the solubility information to select the appropriate solvent.

#### In Vivo

- Add each solvent one by one: PBS  
Solubility: 100 mg/mL (192.88 mM); Clear solution; Need ultrasonic
- Add each solvent one by one: 10% DMSO >> 40% PEG300 >> 5% Tween-80 >> 45% saline  
Solubility: ≥ 2.08 mg/mL (4.01 mM); Clear solution
- Add each solvent one by one: 10% DMSO >> 90% (20% SBE-β-CD in saline)  
Solubility: ≥ 2.08 mg/mL (4.01 mM); Clear solution
- Add each solvent one by one: 10% DMSO >> 90% corn oil  
Solubility: ≥ 2.08 mg/mL (4.01 mM); Clear solution

### BIOLOGICAL ACTIVITY

#### Description

Flomoxef sodium is a oxacephem group antibiotic, with excellent activity against various Gram-positive bacteria<sup>[1][2]</sup>.

#### IC<sub>50</sub> & Target

β-lactam

---

## REFERENCES

[1]. Yazawa K, et al. In-vitro activity of flomoxef, a new oxacephem group antibiotic, against Nocardia in comparison with other cephalosporins. J Antimicrob Chemother. 1989 Dec;24(6):921-5.

[2]. Simon C, et al. In vitro activity of flomoxef in comparison to other cephalosporins. Infection. 1988 Mar-Apr;16(2):131-4.

---

**Caution: Product has not been fully validated for medical applications. For research use only.**

Tel: 609-228-6898

Fax: 609-228-5909

E-mail: [tech@MedChemExpress.com](mailto:tech@MedChemExpress.com)

Address: 1 Deer Park Dr, Suite Q, Monmouth Junction, NJ 08852, USA