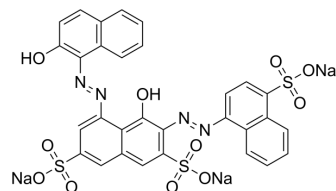


Fast Sulphon Black F

Cat. No.:	HY-D1492
CAS No.:	3682-47-1
Molecular Formula:	C ₃₀ H ₁₇ N ₄ Na ₃ O ₁₁ S ₃
Molecular Weight:	774.64
Target:	Fluorescent Dye
Pathway:	Others
Storage:	Please store the product under the recommended conditions in the Certificate of Analysis.



BIOLOGICAL ACTIVITY

Description

Fast Sulphon Black F is a specific copper indicator. Fast Sulphon Black F can be used for EDTA titration^[1].

REFERENCES

[1]. Mahendra N, et al. Investigation of a Cu (II) fibre optic chemical sensor using fast sulphon black F (FSBF) immobilised onto XAD-7. Sensors and Actuators B: Chemical, 2002, 81(2-3): 196-201.

Caution: Product has not been fully validated for medical applications. For research use only.

Tel: 609-228-6898

Fax: 609-228-5909

E-mail: tech@MedChemExpress.com

Address: 1 Deer Park Dr, Suite Q, Monmouth Junction, NJ 08852, USA