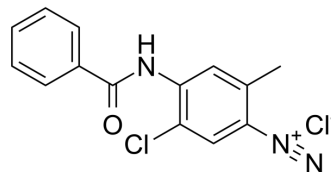


## Fast Red Violet LB

Cat. No.:	HY-D1491
CAS No.:	32348-81-5
Molecular Formula:	C <sub>14</sub> H <sub>11</sub> Cl <sub>2</sub> N <sub>3</sub> O
Molecular Weight:	308.16
Target:	Fluorescent Dye
Pathway:	Others
Storage:	Please store the product under the recommended conditions in the Certificate of Analysis.



### BIOLOGICAL ACTIVITY

#### Description

Fast Red Violet LB is a dye for staining tartrate resistant acid phosphatase (TRAP). Fast Red Violet LB can be used for alkaline phosphatase (ALP) activity staining<sup>[1][2]</sup>.

### REFERENCES

[1]. Yan D, et al. Genetic background influences fluoride's effects on osteoclastogenesis. *Bone*. 2007 Dec;41(6):1036-44.

[2]. Kotobuki N, et al. Cultured autologous human cells for hard tissue regeneration: preparation and characterization of mesenchymal stem cells from bone marrow. *Artif Organs*. 2004 Jan;28(1):33-9.

**Caution: Product has not been fully validated for medical applications. For research use only.**

Tel: 609-228-6898

Fax: 609-228-5909

E-mail: tech@MedChemExpress.com

Address: 1 Deer Park Dr, Suite Q, Monmouth Junction, NJ 08852, USA