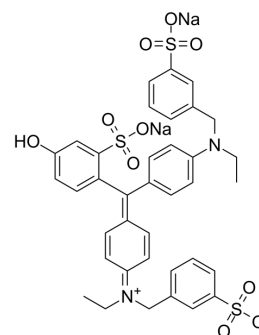


Fast Green FCF

Cat. No.:	HY-D0914
CAS No.:	2353-45-9
Molecular Formula:	C ₃₇ H ₃₄ N ₂ Na ₂ O ₁₀ S ₃
Molecular Weight:	808.85
Target:	Fluorescent Dye
Pathway:	Others
Storage:	4°C, sealed storage, away from moisture and light * In solvent : -80°C, 6 months; -20°C, 1 month (sealed storage, away from moisture and light)



SOLVENT & SOLUBILITY

In Vitro	H ₂ O : 10 mg/mL (12.36 mM; Need ultrasonic)					
	Preparing Stock Solutions	Solvent \ Concentration	Mass	1 mg	5 mg	10 mg
		1 mM		1.2363 mL	6.1816 mL	12.3632 mL
		5 mM		0.2473 mL	1.2363 mL	2.4726 mL
		10 mM		0.1236 mL	0.6182 mL	1.2363 mL
Please refer to the solubility information to select the appropriate solvent.						
In Vivo	1. Add each solvent one by one: PBS Solubility: 4.55 mg/mL (5.63 mM); Clear solution; Need ultrasonic and warming and heat to 60°C					

BIOLOGICAL ACTIVITY

Description	Fast Green FCF is a sea green triarylmethane food dye, with absorption maximum ranging from 622 to 626 nm. Fast Green FCF is widely used as a staining agent like quantitative stain for histones at alkaline pH after acid extraction of DNA, and as a protein stain in electrophoresis. Fast Green FCF is carcinogenic and acts as a presynaptic locus by inhibiting the release of neurotransmitters in the nervous system ^[1] .
--------------------	--

REFERENCES

[1]. Mittal A, et al. Batch and bulk removal of a triarylmethane dye, Fast Green FCF, from wastewater by adsorption over waste materials. J Hazard Mater. 2009 Apr 30;163(2-3):568-77.

Caution: Product has not been fully validated for medical applications. For research use only.

Tel: 609-228-6898

Fax: 609-228-5909

E-mail: tech@MedChemExpress.com

Address: 1 Deer Park Dr, Suite Q, Monmouth Junction, NJ 08852, USA