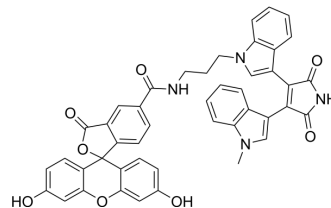


## FIM-1

Cat. No.:	HY-D1493
CAS No.:	220518-50-3
Molecular Formula:	C <sub>45</sub> H <sub>32</sub> N <sub>4</sub> O <sub>8</sub>
Molecular Weight:	756.76
Target:	PKC
Pathway:	Epigenetics; TGF-beta/Smad
Storage:	Please store the product under the recommended conditions in the Certificate of Analysis.



## BIOLOGICAL ACTIVITY

### Description

FIM-1 is a fluorescent PKC (protein kinase C) probe that can be used for mitochondrial staining. FIM-1 inhibits PKC and acts as ATP-competitive catalytic site inhibitor<sup>[1]</sup>.

## REFERENCES

[1]. Chen CS, et al. New fluorescent probes for protein kinase C. Synthesis, characterization, and application. J Biol Chem. 1993 Jul 25;268(21):15812-22.

**Caution: Product has not been fully validated for medical applications. For research use only.**

Tel: 609-228-6898

Fax: 609-228-5909

E-mail: tech@MedChemExpress.com

Address: 1 Deer Park Dr, Suite Q, Monmouth Junction, NJ 08852, USA