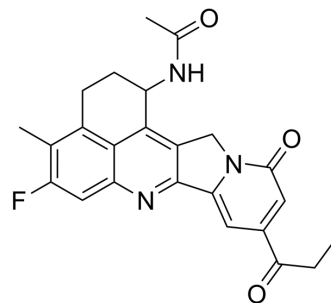


## Exatecan analog 36

Cat. No.:	HY-48878		
Molecular Formula:	C <sub>24</sub> H <sub>22</sub> FN <sub>3</sub> O <sub>3</sub>		
Molecular Weight:	419.45		
Target:	ADC Cytotoxin; Topoisomerase		
Pathway:	Antibody-drug Conjugate/ADC Related; Cell Cycle/DNA Damage		
Storage:	Powder	-20°C	3 years
		4°C	2 years
	In solvent	-80°C	6 months
		-20°C	1 month



### BIOLOGICAL ACTIVITY

Description	Exatecan analog 36 is a analog of Exatecan (HY-13631). Exatecan (DX-8951) is a common toxin component in ADC preparation (ADC Cytotoxin) and an inhibitor of DNA topoisomerase I (IC <sub>50</sub> =2.2 μM) <sup>[1]</sup> .
IC <sub>50</sub> & Target	Camptothecins

### REFERENCES

[1]. Mitsui I, et al. A new water-soluble camptothecin derivative, DX-8951f, exhibits potent antitumor activity against human tumors in vitro and in vivo. Jpn J Cancer Res. 1995 Aug;86(8):776-82.

**Caution: Product has not been fully validated for medical applications. For research use only.**

Tel: 609-228-6898

Fax: 609-228-5909

E-mail: tech@MedChemExpress.com

Address: 1 Deer Park Dr, Suite Q, Monmouth Junction, NJ 08852, USA