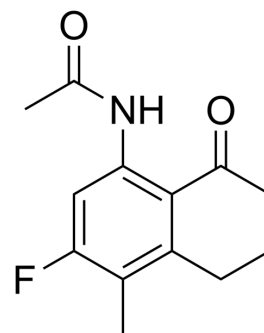


Exatecan Intermediate 6

Cat. No.:	HY-44369		
CAS No.:	143655-58-7		
Molecular Formula:	C ₁₃ H ₁₄ FNO ₂		
Molecular Weight:	235.25		
Target:	ADC Cytotoxin; Topoisomerase		
Pathway:	Antibody-drug Conjugate/ADC Related; Cell Cycle/DNA Damage		
Storage:	Powder	-20°C	3 years
		4°C	2 years
	In solvent	-80°C	6 months
		-20°C	1 month



SOLVENT & SOLUBILITY

In Vitro

DMSO : 25 mg/mL (106.27 mM; Need ultrasonic)

Concentration	Mass		
	1 mg	5 mg	10 mg
1 mM	4.2508 mL	21.2540 mL	42.5080 mL
5 mM	0.8502 mL	4.2508 mL	8.5016 mL
10 mM	0.4251 mL	2.1254 mL	4.2508 mL

Please refer to the solubility information to select the appropriate solvent.

BIOLOGICAL ACTIVITY

Description

Exatecan Intermediate 6 is the intermediate of Exatecan (HY-13631) And Exatecan (DX-8951) is a DNA topoisomerase I inhibitor with an IC₅₀ value of 2.2 μM (0.975 μg/mL) that can be used in cancer research. Exatecan Intermediate 6 can be used to synthesize Antibody-Drug Conjugates (ADCs).

IC₅₀ & Target

Camptothecins

REFERENCES

[1]. Zhang, et al. Intermediate for synthesizing camptothecin derivatives using exatecan mesylate and its preparation method and application. China, CN111470998 A. 2020-07-31.

[2]. Mitsui I, et al. A new water-soluble camptothecin derivative, DX-8951f, exhibits potent antitumor activity against human tumors in vitro and in vivo. Jpn J Cancer Res. 1995 Aug;86(8):776-82.

Caution: Product has not been fully validated for medical applications. For research use only.

Tel: 609-228-6898

Fax: 609-228-5909

E-mail: tech@MedChemExpress.com

Address: 1 Deer Park Dr, Suite Q, Monmouth Junction, NJ 08852, USA