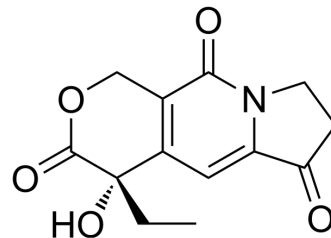


Exatecan Intermediate 1

Cat. No.:	HY-42487
CAS No.:	110351-94-5
Molecular Formula:	C ₁₃ H ₁₃ NO ₅
Molecular Weight:	263.25
Target:	ADC Cytotoxin; Topoisomerase
Pathway:	Antibody-drug Conjugate/ADC Related; Cell Cycle/DNA Damage
Storage:	4°C, sealed storage, away from moisture
	In solvent -80°C 2 years
	-20°C 1 year



SOLVENT & SOLUBILITY

In Vitro	DMSO : 25 mg/mL (94.97 mM; Need ultrasonic)																					
	<table border="1"> <thead> <tr> <th rowspan="2">Solvent</th> <th rowspan="2">Mass</th> <th colspan="3">Concentration</th> </tr> <tr> <th>1 mg</th> <th>5 mg</th> <th>10 mg</th> </tr> </thead> <tbody> <tr> <td rowspan="3">Preparing Stock Solutions</td> <td>1 mM</td> <td>3.7987 mL</td> <td>18.9934 mL</td> <td>37.9867 mL</td> </tr> <tr> <td>5 mM</td> <td>0.7597 mL</td> <td>3.7987 mL</td> <td>7.5973 mL</td> </tr> <tr> <td>10 mM</td> <td>0.3799 mL</td> <td>1.8993 mL</td> <td>3.7987 mL</td> </tr> </tbody> </table>	Solvent	Mass	Concentration			1 mg	5 mg	10 mg	Preparing Stock Solutions	1 mM	3.7987 mL	18.9934 mL	37.9867 mL	5 mM	0.7597 mL	3.7987 mL	7.5973 mL	10 mM	0.3799 mL	1.8993 mL	3.7987 mL
Solvent	Mass			Concentration																		
		1 mg	5 mg	10 mg																		
Preparing Stock Solutions	1 mM	3.7987 mL	18.9934 mL	37.9867 mL																		
	5 mM	0.7597 mL	3.7987 mL	7.5973 mL																		
	10 mM	0.3799 mL	1.8993 mL	3.7987 mL																		
	Please refer to the solubility information to select the appropriate solvent.																					
In Vivo	<ol style="list-style-type: none"> Add each solvent one by one: 10% DMSO >> 40% PEG300 >> 5% Tween-80 >> 45% saline Solubility: ≥ 2.08 mg/mL (7.90 mM); Clear solution Add each solvent one by one: 10% DMSO >> 90% (20% SBE-β-CD in saline) Solubility: ≥ 2.08 mg/mL (7.90 mM); Clear solution 																					

BIOLOGICAL ACTIVITY

Description	Exatecan Intermediate 1 (compound 6) is an intermediate of Exatecan (DX-8951, HY-13631). Exatecan is an anticancer agent belonging to the class of camptothecin analogs. Exatecan interferes with the proliferation and division of tumor cells by interacting with DNA, thereby inhibiting tumor growth. Exatecan is primarily used for research of a variety of cancers including ovarian, lung and breast cancers ^{[1][2]} .
IC₅₀ & Target	Camptothecins

REFERENCES

[1]. Weng W, et al. Antibody-Exatecan Conjugates with a Novel Self-immolative Moiety Overcome Resistance in Colon and Lung Cancer. *Cancer Discov.* 2023 Apr 3;13(4):950-973.

[2]. Zhang Hongwei, et al. Intermediate for synthesizing camptothecin derivatives using exatecan mesylate and its preparation method and application. China, CN111470998. 2020-07-31.

Caution: Product has not been fully validated for medical applications. For research use only.

Tel: 609-228-6898

Fax: 609-228-5909

E-mail: tech@MedChemExpress.com

Address: 1 Deer Park Dr, Suite Q, Monmouth Junction, NJ 08852, USA