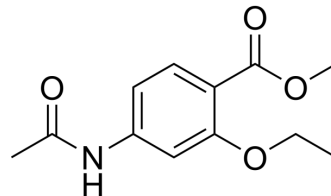


## Ethopabate

Cat. No.:	HY-B2138		
CAS No.:	59-06-3		
Molecular Formula:	C <sub>12</sub> H <sub>15</sub> NO <sub>4</sub>		
Molecular Weight:	237.25		
Target:	Parasite; Antibiotic		
Pathway:	Anti-infection		
Storage:	Powder	-20°C	3 years
		4°C	2 years
	In solvent	-80°C	2 years
		-20°C	1 year



### SOLVENT & SOLUBILITY

In Vitro	DMSO : 50 mg/mL (210.75 mM; Need ultrasonic)			
		Solvent Concentration	Mass	
			1 mg	5 mg
			10 mg	
Preparing Stock Solutions	1 mM	4.2150 mL	21.0748 mL	42.1496 mL
	5 mM	0.8430 mL	4.2150 mL	8.4299 mL
	10 mM	0.4215 mL	2.1075 mL	4.2150 mL
Please refer to the solubility information to select the appropriate solvent.				
In Vivo	<ol style="list-style-type: none"> <li>Add each solvent one by one: 10% DMSO &gt;&gt; 40% PEG300 &gt;&gt; 5% Tween-80 &gt;&gt; 45% saline Solubility: ≥ 2.5 mg/mL (10.54 mM); Clear solution</li> <li>Add each solvent one by one: 10% DMSO &gt;&gt; 90% (20% SBE-β-CD in saline) Solubility: ≥ 2.5 mg/mL (10.54 mM); Clear solution</li> <li>Add each solvent one by one: 10% DMSO &gt;&gt; 90% corn oil Solubility: ≥ 2.5 mg/mL (10.54 mM); Clear solution</li> </ol>			

### BIOLOGICAL ACTIVITY

Description	Ethopabate is an antiprotozoal agent which has been widely used to treat and prevent coccidiosis in chickens.
IC <sub>50</sub> & Target	Coccidia

### REFERENCES

**Caution: Product has not been fully validated for medical applications. For research use only.**

Tel: 609-228-6898

Fax: 609-228-5909

E-mail: [tech@MedChemExpress.com](mailto:tech@MedChemExpress.com)

Address: 1 Deer Park Dr, Suite Q, Monmouth Junction, NJ 08852, USA