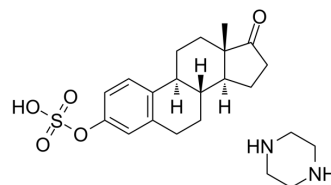


Estropiate

| | |
|---------------------------|--|
| Cat. No.: | HY-B1361 |
| CAS No.: | 7280-37-7 |
| Molecular Formula: | C ₂₂ H ₃₂ N ₂ O ₅ S |
| Molecular Weight: | 436.56 |
| Target: | Estrogen Receptor/ERR |
| Pathway: | Vitamin D Related/Nuclear Receptor |
| Storage: | 4°C, sealed storage, away from moisture * In solvent : -80°C, 6 months; -20°C, 1 month (sealed storage, away from moisture) |



SOLVENT & SOLUBILITY

| | | | | | |
|---|---|--------------------------|--------------|------------|------------|
| In Vitro | DMSO : 110 mg/mL (251.97 mM; Need ultrasonic) | | | | |
| | | Solvent Concentration | Mass 1 mg | 5 mg | 10 mg |
| | Preparing Stock Solutions | 1 mM | 2.2906 mL | 11.4532 mL | 22.9064 mL |
| | | 5 mM | 0.4581 mL | 2.2906 mL | 4.5813 mL |
| | | 10 mM | 0.2291 mL | 1.1453 mL | 2.2906 mL |
| Please refer to the solubility information to select the appropriate solvent. | | | | | |
| In Vivo | 1. Add each solvent one by one: 10% DMSO >> 40% PEG300 >> 5% Tween-80 >> 45% saline Solubility: ≥ 2.75 mg/mL (6.30 mM); Clear solution | | | | |
| | 2. Add each solvent one by one: 10% DMSO >> 90% (20% SBE-β-CD in saline) Solubility: ≥ 2.75 mg/mL (6.30 mM); Clear solution | | | | |
| | 3. Add each solvent one by one: 10% DMSO >> 90% corn oil Solubility: ≥ 2.75 mg/mL (6.30 mM); Clear solution | | | | |

BIOLOGICAL ACTIVITY

| | |
|--------------------|---|
| Description | Estropiate is a form of estrogen, used to treat symptoms of menopause, also used to prevent osteoporosis. |
|--------------------|---|

Caution: Product has not been fully validated for medical applications. For research use only.

Tel: 609-228-6898

Fax: 609-228-5909

E-mail: tech@MedChemExpress.com

Address: 1 Deer Park Dr, Suite Q, Monmouth Junction, NJ 08852, USA