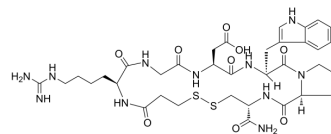


Eptifibatide

Cat. No.:	HY-B0686
CAS No.:	188627-80-7
Molecular Formula:	C ₃₅ H ₄₉ N ₁₁ O ₉ S ₂
Molecular Weight:	831.96
Sequence:	MPA-HAR-Gly-Asp-Trp-Pro-Cys-NH ₂
Sequence Shortening:	MPA-HAR-GDWPC-NH ₂
Target:	Integrin
Pathway:	Cytoskeleton
Storage:	Sealed storage, away from moisture and light
	Powder -80°C 2 years
	-20°C 1 year



* In solvent : -80°C, 6 months; -20°C, 1 month (sealed storage, away from moisture and light)

SOLVENT & SOLUBILITY

In Vitro

DMSO : 250 mg/mL (300.50 mM; Need ultrasonic)
 H₂O : 50 mg/mL (60.10 mM; Need ultrasonic)

Concentration	Solvent	Mass		
		1 mg	5 mg	10 mg
Preparing Stock Solutions	1 mM	1.2020 mL	6.0099 mL	12.0198 mL
	5 mM	0.2404 mL	1.2020 mL	2.4040 mL
	10 mM	0.1202 mL	0.6010 mL	1.2020 mL

Please refer to the solubility information to select the appropriate solvent.

In Vivo

- Add each solvent one by one: PBS
Solubility: 100 mg/mL (120.20 mM); Clear solution; Need ultrasonic
- Add each solvent one by one: 10% DMSO >> 40% PEG300 >> 5% Tween-80 >> 45% saline
Solubility: ≥ 2.08 mg/mL (2.50 mM); Clear solution
- Add each solvent one by one: 10% DMSO >> 90% (20% SBE-β-CD in saline)
Solubility: ≥ 2.08 mg/mL (2.50 mM); Clear solution
- Add each solvent one by one: 10% DMSO >> 90% corn oil
Solubility: ≥ 2.08 mg/mL (2.50 mM); Clear solution

BIOLOGICAL ACTIVITY

Description

Eptifibatide is a cyclic heptapeptide, acts as a competitive antagonist for the activated platelet glycoprotein IIb/IIIa receptor,

with anti-platelet activity^[1].

In Vitro

Eptifibatide is a cyclic heptapeptide, acts as a competitive antagonist for the activated platelet glycoprotein IIb/IIIa receptor, with anti-platelet activity^[1].

MCE has not independently confirmed the accuracy of these methods. They are for reference only.

CUSTOMER VALIDATION

- Pharmacol Res. 2021 Mar 9;105540.
- Int J Mol Sci. 2021, 22(7), 3323.
- Platelets. 2024 Dec;35(1):2308635.
- Rheinische Friedrich-Wilhelms-Universität Bonn. 2023 May 31.
- Faculty of Pharmaceutical Sciences. Ghent University. 2018 May.

See more customer validations on www.MedChemExpress.com

REFERENCES

[1]. Gilchrist IC, et al. Platelet glycoprotein IIb/IIIa inhibitors in percutaneous coronary intervention: focus on the pharmacokinetic-pharmacodynamic relationships of eptifibatide. Clin Pharmacokinet. 2003;42(8):703-20.

Caution: Product has not been fully validated for medical applications. For research use only.

Tel: 609-228-6898

Fax: 609-228-5909

E-mail: tech@MedChemExpress.com

Address: 1 Deer Park Dr, Suite Q, Monmouth Junction, NJ 08852, USA