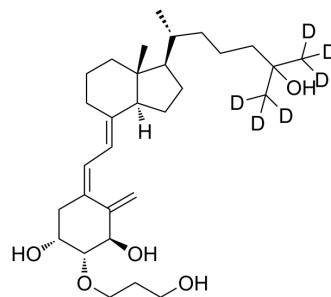


## Eldecalcitol-d<sub>6</sub>

|                           |  |
|---------------------------|--|
| <b>Cat. No.:</b>          | HY-A0020S  |
| <b>Molecular Formula:</b> | C <sub>30</sub> H <sub>44</sub> D <sub>6</sub> O <sub>5</sub>  |
| <b>Molecular Weight:</b>  | 496.75   |
| <b>Target:</b>            | VD/VDR   |
| <b>Pathway:</b>           | Vitamin D Related/Nuclear Receptor   |
| <b>Storage:</b>           | -20°C, protect from light, stored under nitrogen<br>* In solvent : -80°C, 6 months; -20°C, 1 month (protect from light, stored under nitrogen) |



### SOLVENT & SOLUBILITY

#### In Vitro

DMSO : 25 mg/mL (50.33 mM; Need ultrasonic)

| Concentration             | Solvent | Mass      |            |            |
|---------------------------|---------|-----------|------------|------------|
|                           |         | 1 mg      | 5 mg       | 10 mg      |
| Preparing Stock Solutions | 1 mM    | 2.0131 mL | 10.0654 mL | 20.1308 mL |
|                           | 5 mM    | 0.4026 mL | 2.0131 mL  | 4.0262 mL  |
|                           | 10 mM   | 0.2013 mL | 1.0065 mL  | 2.0131 mL  |

Please refer to the solubility information to select the appropriate solvent.

### BIOLOGICAL ACTIVITY

#### Description

Eldecalcitol-d<sub>6</sub> is the deuterium labeled Eldecalcitol. Eldecalcitol is an orally active analogue of active vitamin D used in the treatment of osteoporosis.

#### In Vitro

Eldecalcitol possesses a strong inhibitory effect on bone resorption and causes a significant increase in bone mineral density [1].

MCE has not independently confirmed the accuracy of these methods. They are for reference only.

### REFERENCES

[1]. Noguchi Y, et al. Eldecalcitol for the treatment of osteoporosis. Clin Interv Aging. 2013;8:1313-21.

---

**Caution: Product has not been fully validated for medical applications. For research use only.**

Tel: 609-228-6898

Fax: 609-228-5909

E-mail: [tech@MedChemExpress.com](mailto:tech@MedChemExpress.com)

Address: 1 Deer Park Dr, Suite Q, Monmouth Junction, NJ 08852, USA