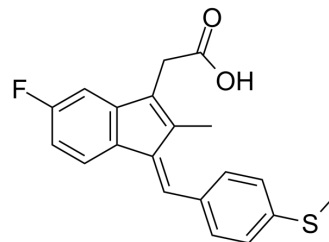


## (E/Z)-Sulindac sulfide

Cat. No.:	HY-B1786A
CAS No.:	32004-67-4
Molecular Formula:	C <sub>20</sub> H <sub>17</sub> FO <sub>2</sub> S
Molecular Weight:	340.41
Target:	γ-secretase; Amyloid-β
Pathway:	Neuronal Signaling; Stem Cell/Wnt
Storage:	4°C, protect from light * In solvent : -80°C, 6 months; -20°C, 1 month (protect from light)



### BIOLOGICAL ACTIVITY

Description	(E/Z)-Sulindac sulfide is a potent γ-secretase modulator (GSM). (E/Z)-Sulindac sulfide selectively reduces Aβ <sub>42</sub> production in favor of shorter Aβ species. (E/Z)-Sulindac sulfide can be used for researching Alzheimer's disease <sup>[1]</sup> .
IC <sub>50</sub> & Target	γ-secretase, Amyloid-β <sup>[1]</sup>

### REFERENCES

[1]. Richter L, et al. Amyloid beta 42 peptide (Abeta42)-lowering compounds directly bind to Abeta and interfere with amyloid precursor protein (APP) transmembrane dimerization. Proc Natl Acad Sci U S A. 2010 Aug 17;107(33):14597-602.

**Caution: Product has not been fully validated for medical applications. For research use only.**

Tel: 609-228-6898

Fax: 609-228-5909

E-mail: tech@MedChemExpress.com

Address: 1 Deer Park Dr, Suite Q, Monmouth Junction, NJ 08852, USA