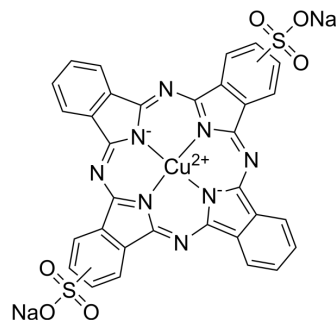


## Direct Blue 86

Cat. No.:	HY-D0953
CAS No.:	1330-38-7
Molecular Formula:	C <sub>32</sub> H <sub>14</sub> CuN <sub>8</sub> O <sub>6</sub> S <sub>2</sub> .2Na
Molecular Weight:	780.16
Target:	Fluorescent Dye
Pathway:	Others
Storage:	Please store the product under the recommended conditions in the Certificate of Analysis.



### BIOLOGICAL ACTIVITY

#### Description

Direct Blue 86 (Solvent Blue 38) is a myelin-sheath stain, commonly utilized in microscopy to detect demyelination in the central nervous system. Direct Blue 86 also is a dye with various applications including as a commercial dye in the printing of cotton and mucilage glue fabrics<sup>[1]</sup>.

### REFERENCES

[1]. Ahmed El Nemr, et al. Removal of direct blue-86 from aqueous solution by new activated carbon developed from orange peel. J Hazard Mater. 2009 Jan 15;161(1):102-10.

**Caution: Product has not been fully validated for medical applications. For research use only.**

Tel: 609-228-6898

Fax: 609-228-5909

E-mail: tech@MedChemExpress.com

Address: 1 Deer Park Dr, Suite Q, Monmouth Junction, NJ 08852, USA