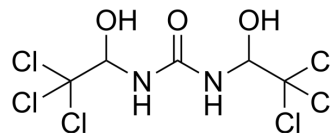


Dicloralurea

Cat. No.:	HY-B0922
CAS No.:	116-52-9
Molecular Formula:	C ₅ H ₆ Cl ₆ N ₂ O ₃
Molecular Weight:	354.83
Target:	Biochemical Assay Reagents
Pathway:	Others
Storage:	Please store the product under the recommended conditions in the Certificate of Analysis.



BIOLOGICAL ACTIVITY

Description

Dicloralurea is a veterinary food additive that inhibits methane production in herbivore ruminants, acts as a growth stimulant.

Caution: Product has not been fully validated for medical applications. For research use only.

Tel: 609-228-6898

Fax: 609-228-5909

E-mail: tech@MedChemExpress.com

Address: 1 Deer Park Dr, Suite Q, Monmouth Junction, NJ 08852, USA