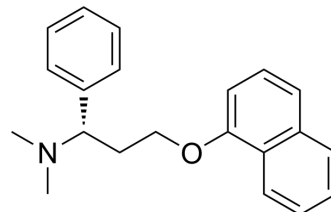


Dapoxetine

Cat. No.:	HY-B0304
CAS No.:	119356-77-3
Molecular Formula:	C ₂₁ H ₂₃ NO
Molecular Weight:	305.41
Target:	Serotonin Transporter
Pathway:	Neuronal Signaling
Storage:	Please store the product under the recommended conditions in the Certificate of Analysis.



BIOLOGICAL ACTIVITY

Description	Dapoxetine (LY-210448) is an orally active and selective serotonin reuptake inhibitor (SSRI). Dapoxetine can be used for the research of premature ejaculation (PE) ^[1] .								
In Vitro	Dapoxetine binds to 5-HT, norepinephrine, and dopamine reuptake transporters and inhibits 5-HT, norepinephrine, and dopamine uptake with an order of potency: 5-HT > norepinephrine > dopamine. Dapoxetine inhibits the uptake of [³ H]5-HT by the 5-HT reuptake transporter with a value of 1.12 nM, and Dapoxetine inhibits the uptake of [³ H]norepinephrine into cells utilizing the norepinephrine reuptake transporter and uptake of [³ H]dopamine by the dopamine reuptake transporter with IC ₅₀ values of 202 nM and 1720 nM, respectively. ^[1] MCE has not independently confirmed the accuracy of these methods. They are for reference only.								
In Vivo	Dapoxetine (oral gavage; 1-10 mg/kg; once daily) significantly inhibits testosterone mediated increase in the prostate weight and relative prostate weight and attenuates testosterone-induced prostatic hyperplasia in rats ^[2] . MCE has not independently confirmed the accuracy of these methods. They are for reference only.								
	<table border="1"> <tr> <td>Animal Model:</td> <td>Adult male Wistar rats^[2]</td> </tr> <tr> <td>Dosage:</td> <td>1 mg/kg, 5 mg/kg, 10 mg/kg</td> </tr> <tr> <td>Administration:</td> <td>Oral gavage; 1-10 mg/kg; once daily</td> </tr> <tr> <td>Result:</td> <td>Reverted most of the changes made by testosterone injection.</td> </tr> </table>	Animal Model:	Adult male Wistar rats ^[2]	Dosage:	1 mg/kg, 5 mg/kg, 10 mg/kg	Administration:	Oral gavage; 1-10 mg/kg; once daily	Result:	Reverted most of the changes made by testosterone injection.
Animal Model:	Adult male Wistar rats ^[2]								
Dosage:	1 mg/kg, 5 mg/kg, 10 mg/kg								
Administration:	Oral gavage; 1-10 mg/kg; once daily								
Result:	Reverted most of the changes made by testosterone injection.								

REFERENCES

[1]. Muammer Kendirci, et al. Dapoxetine, a novel selective serotonin transport inhibitor for the treatment of premature ejaculation. Ther Clin Risk Manag. 2007 Jun;3(2):277-89.

[2]. Rabab H Sayed, et al. Dapoxetine attenuates testosterone-induced prostatic hyperplasia in rats by the regulation of inflammatory and apoptotic proteins. Toxicol Appl Pharmacol. 2016 Nov 15;311:52-60.

Caution: Product has not been fully validated for medical applications. For research use only.

Tel: 609-228-6898

Fax: 609-228-5909

E-mail: tech@MedChemExpress.com

Address: 1 Deer Park Dr, Suite Q, Monmouth Junction, NJ 08852, USA