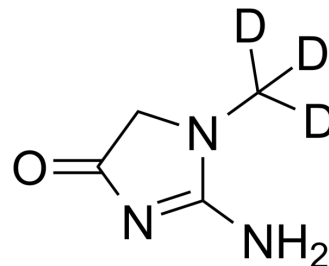


Creatinine-d₃

Cat. No.:	HY-B0504S
CAS No.:	143827-20-7
Molecular Formula:	C ₄ H ₄ D ₃ N ₃ O
Molecular Weight:	116.14
Target:	Endogenous Metabolite
Pathway:	Metabolic Enzyme/Protease
Storage:	-20°C, sealed storage, away from moisture * In solvent : -80°C, 6 months; -20°C, 1 month (sealed storage, away from moisture)



SOLVENT & SOLUBILITY

In Vitro

H₂O : 83.33 mg/mL (717.50 mM; Need ultrasonic)
H₂O : 83.33 mg/mL (717.50 mM; Need ultrasonic)

Solvent	Mass	Concentration		
		1 mg	5 mg	10 mg
Preparing Stock Solutions	1 mM	8.6103 mL	43.0515 mL	86.1030 mL
	5 mM	1.7221 mL	8.6103 mL	17.2206 mL
	10 mM	0.8610 mL	4.3051 mL	8.6103 mL

Please refer to the solubility information to select the appropriate solvent.

BIOLOGICAL ACTIVITY

Description

Creatinine-d₃ is a deuterium labeled Creatinine. Creatinine is a break-down product of creatine phosphate in muscle^[1].

IC₅₀ & Target

Human Endogenous Metabolite^[1]

REFERENCES

[1]. Allen, P.J., Creatine metabolism and psychiatric disorders: Does creatine supplementation have therapeutic value. *Neurosci Biobehav Rev*, 2012. 36(5): p. 1442-62.

Caution: Product has not been fully validated for medical applications. For research use only.

Tel: 609-228-6898

Fax: 609-228-5909

E-mail: tech@MedChemExpress.com

Address: 1 Deer Park Dr, Suite Q, Monmouth Junction, NJ 08852, USA